

FARMASI







FARMASI

EXPLORE THE COLLECTION

farmasius.com

LIPSTICK COLLECTION	<u>04 - 19</u>
MASCARA COLLECTION	<u>20 - 29</u>
EYELINER COLLECTION	<u>30 - 34</u>
EYESHADOW COLLECTION	<u>36-42</u>
EYEBROW COLLECTION	<u>43 - 45</u>
PRIMER SERIES	<u>46 - 47</u>
FACE COLLECTION	<u>48 - 64</u>
MAKEUP REMOVERS	<u>65</u>
NAIL SERIES	<u>66</u>
ACCESSORIES COLLECTION	<u>67</u>
WOMEN FRAGRANCES	<u>68-69</u>
KERATIN THERAPY COLLECTION	<u>70-71</u>
TOOTHPASTE	<u>72</u>
SOAP COLLECTION	<u>73</u>
SHIELD MAN COLLECTION	<u>74-75</u>
MEN FRAGRANCES	<u>76-77</u>

FARMASI MAKE-UP

For jaw-dropping make-up looks, discover FARMASI's innovative and high-performance beauty products. Using rich and extraordinary shades inspired by the latest trending colors, FARMASI makeup will elevate your everyday beauty experience.

Para un maquillaje de ensueño, descubre los productos de maquillaje innovadores y de alta calidad FARMASI. Tonos ideales inspirados en las últimas tendencias. ¡Experimenta un nuevo nivel de belleza con FARMASI!



VFX ELITE LIQUID LIPSTICK

Meet Your Perfect Matte
Conoce tu Mate perfecto

WHAT IT IS

Lightweight, long-lasting matte color that won't transfer. Every shade is rich, smooth, and provides a flawless finish.

Ligera y de perfecta duración. Fórmula No-Transfer.
Cada tono es vibrante y proporciona un acabado impecable.

VFX Elite Lipstick

0.14 fl. oz.

All Shades

\$19.00



Fast Dry | Secado Rápido

8 Hours Long Lasting | 8 horas de duración





Escanea el código QR para
obtener más información

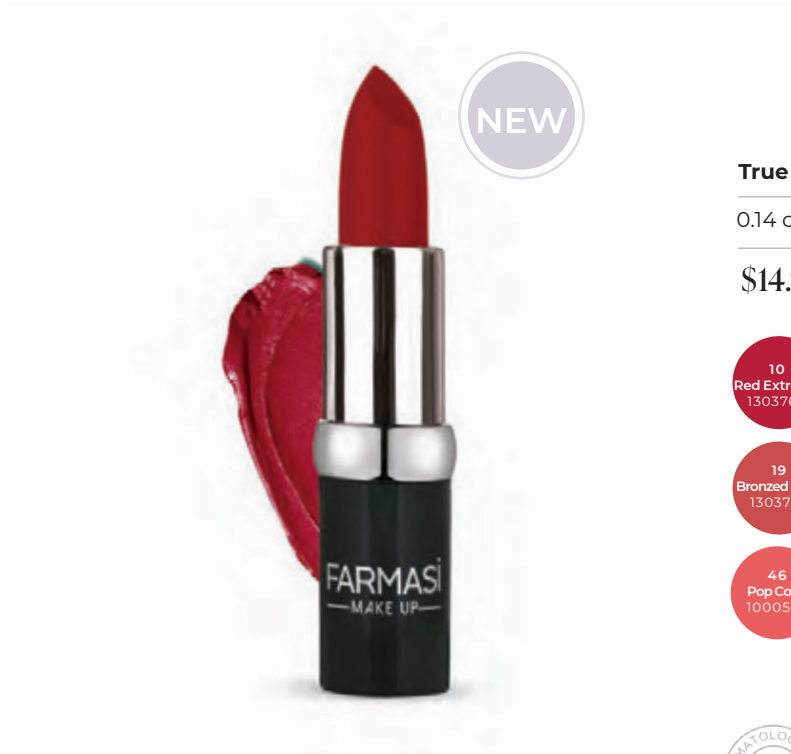
01 Retro rose| 02 Cool Beige

From Left to Right shades that have been used on the models

TRUE COLOR LIPSTICK

Intense Long-Lasting Lip Color
Color de labios intenso y duradero

Creamy texture for moisturized and luscious lips.
Textura cremosa para labios hidratados y atractivos.



True Color Lipstick

0.14 oz.

All Shades

\$14.90





20 SWEET BEIGE
has been used on the model.



MATTE LIPSTICK

More Intense Lip color

Color de labios más intenso

Velvety texture and intense color for a precise, moisturized look in one stroke.

Textura aterciopelada e intensa para un resultado preciso en una pasada.



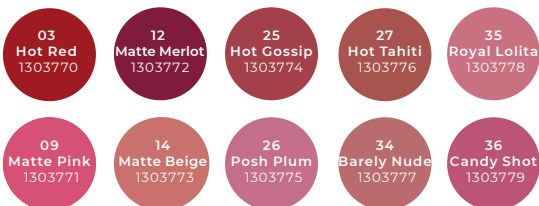
NEW

Matte Lipstick

0.14 oz.

All Shades

\$14.90



MATTE LIQUID LIPSTICK

8 Hours of Flawless Color
Color intenso durante 8 horas

Creamy texture for moisturized and luscious lips.
Textura cremosa para labios hidratados y atractivos.

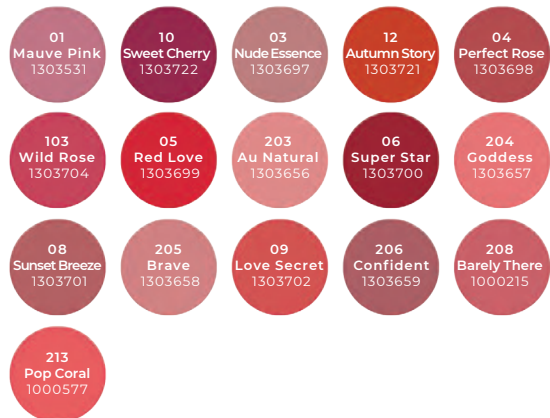


Matte Liquid Lipstick

0.14 fl. oz.

All Shades

\$11.90







05 Chic Stiletto
has been used on the model

Scan the QR code
to watch video

Escanea el código
QR para ver el video



NUDES FOR ALL LIP GLOSS

The Perfect Nude Gloss

El gloss perfecto nude

Non-Sticky Formula.

Fórmula no pegajosa.



Nudes For All

Lip Gloss

0.14 fl. oz.

All Shades

\$16.90



BB MATTE LIPSTICK

For a Moisturized, Rich Look
Para una apariencia impecable

A new, enriched formula with special active extracted from Wild Mango Tree which hydrates and softns lips.

Una nueva fórmula enriquecida con un activo principal extraído del árbol de mango lo cual hidrata y suaviza los labios.



Non-drying Formula
Fórmula que no seca



BB Matte Lipstick

0.14 oz.

All Shades

\$14.90



LIP LINER

Long-Lasting Fórmula

Fórmula de larga duración

Perfect and Precise.

Perfecto y preciso.

Lip Liner

0.04 oz.

All Shades

\$6.90

201
1000026

203
1000027

204
1000028

207
1000029

212
1000030

215
1000031

219
1000032

220
1000033

222
1000034

223
1000035

227
1000036



222 | 1000034
has been used on the model



LIP PLUMPER

Instant Volume
Volumen instantáneo

Get Fuller Looking Lips.
Para labios más llenos.



Lip Plumper

0.15 fl. oz.

1303660

\$15.90



VEGAN

LIP CONDITIONER

Complete Lip Care

Cuidado completo para labios

Soft Smooth Healthy Lips.

Labios suaves, lisos y sanos.

Lip Conditioner

0.12 oz.

1303759

\$14.90



VEGAN



LIMITLESS MASCARA

Capixyl™ infused formula to fortify and condition lashes

Fórmula con Capixyl™ para hidratar y acondicionar las pestañas



Intense Lengthening
Multi-Dimensional Volume
Defined Lashes
Dramatic Lift
Curved Lifting Fiber Brush

Alargamiento intenso
Volumen multidimensional
Pestañas definidas
Elevación espectacular
Cepillo de fibra curvado
Efecto Lifting

Limitless Mascara

0.47 fl. oz.

1301396

\$24.90





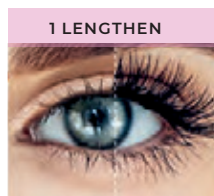
Scan the **QR code**
to get more information

Escanea el **código QR**
para obtener más
información

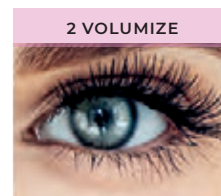
DOUBLE LASH EXTEND MASCARA

False Eyelash Effect

Efecto pestañas postizas



BEFORE



AFTER

**Double Lash
Extend Mascara**

0.41 fl. oz.

1301518


\$22.90



Scan the QR code
to watch video

Escanea el código
QR para ver el video



A close-up photograph of a woman's eye, showcasing long, dark, and voluminous eyelashes. The eye is light-colored, and the skin around it is fair. The text is overlaid in the top left corner.

2 Easy Steps: Length + Volume

2 Pasos Sencillos: Longitud + Volumen



3D EFFECT MASCARA

High-Defenition and Curl

Alta definición y curva

The special fiber brush separates lashes with precision and coats each lash from root to tip, lengthens and defines for a 3D effect.

El cepillo de fibra único separa las pestañas con precisión y cubre cada pestaña desde la raíz hasta la punta, alarga y define para un efecto 3D.

BEFORE



AFTER



3D Effect

Mascara

0.34 fl. oz.

1301344

\$11.90



ZEN MASCARA

Lengthens and Extends

Alarga y amplifica

The silicone brush provides full definition, extension, and impressive length while the formula nourishes lashes with Vitamin E.

El cepillo de silicona proporciona una definición completa, una extensión y una longitud impresionante, mientras que la fórmula con vitamina E nutre las pestañas.

BEFORE



AFTER



ZEN
Mascara

0.3 fl. oz.

1301322

\$8.90







STARLOOK MASCARA

Creates Thick, Full Lashes

Crea pestañas gruesas y completas

The pinecone shaped fiber brush provides fuller lashes with bold impact in one stroke, while the formula nourishes your lashes with vitamin E.

El cepillo de fibra inspirado en la forma del cono de pino, proporciona pestañas más voluminosas una sola pasada, mientras que la fórmula nutre las pestañas con vitamina E.



Starlook
Mascara

0.4 fl. oz.

1301111

\$19.90



EXTREME CURL MASCARA

Curling and Lifting Effect

Rizado y efecto Push-up

The innovative curved brush delivers the perfect dose of product to enhance lashes from root to tip for an immediate push-up effect.

El innovador cepillo curvado ofrece la dosis perfecta de producto para realzar las pestañas desde la raíz hasta las puntas nutre las pestañas para un efecto rizado inmediato.

Extreme Curl Mascara

0.47 fl. oz.

1301347

\$14.90



DEEPLINERS

Perfection for Your Eyes
Perfección para tus Ojos



**Creates
Bold Lines**
Crea líneas
Gruesas

Deeplook
Dipliner
0.13 fl. oz. 1301001
\$ 7.90



**Creates
Thin Lines**
Crea líneas
Finas

Deeplook
Eyeliner
0.13 fl. oz. 1301002
\$ 7.90



Ink Liner

0.03 fl. oz.

All Shades

\$16.90



Inkliner Black
1000025



Inkliner Blue
1000043



Inkliner Dark Blue
1000042



Inkliner Green
1000045



Inkliner Dark Brown
1000041

Water Resistant Formula.
Fórmula Resistente al Agua.

INK LINER

Intense Matte Pigmentation
Fórmula resistente al agua

Waterproof and smudge proof, no transfer.
The extra soft brush tip glides on evenly
to create different looks & lines.

Resistente al agua y no mancha, sin
transfer. La punta del cepillo extra
suave se desliza uniformemente para
crear diferentes estilos y líneas.



Kajal Gel
Eyeliner

0.11 oz.

1301354

\$11.90

KAJAL GEL EYELINER

Eyeliner is an Art
El delineador es Arte

Create your masterpiece with this eyeliner
for the perfect eye look every time.

Creando una obra de arte con este delineador
de ojos que crea la mirada perfecta en todo
momento.





EXTRALAST EYE PENCIL

Glides On With Ease
Se desliza con facilidad

This long wear gel pencil liner is easy to apply and delivers dramatic color in just one stroke.

Este delineador-gel de larga duración y fácil de usar le permite crear una mirada intensa en una pasada.

Extralast Eye Pencil

0.012 oz.

All Shades

\$10.90



01 Dark Blue | 1000020

02 Black | 1000021

03 Silver | 1000022

04 Metallic Brown | 1000023

06 Metallic Green | 1000024



EXPRESS WATERPROOF EYE PENCIL

Almost Like a Liquid Liner

Casi como delineador líquido

Longwear formula that stays in place all day. Smoothly glides onto the skin for precise application.

Fórmula de larga duración. Fácil de utilizar, este delineador se desliza con extrema suavidad sobre la piel para ofrecer un resultado preciso.



Express Waterproof Eye Pencil

0.04 oz.

All Shades

\$11.90



EXPRESS EYE PENCIL

New Generation of Professional Kohl Kajal
Nueva Generación de Kohl Kajal Profesional

A long-wearing, easy to use eye pencil for a precise application.
Available in a range of intense shades in matte and metallic finishes.

Un lápiz de ojos de larga duración y una aplicación fácil y precisa.
Disponible en una gama de tonos intensos con acabados mates y metálicos.



Express Eye Pencil

0.04 oz.

All Shades

\$6.90



DISCOVER LASH ART



Meet Your Lashes' New Best Friend

Conoce los nuevos mejores amigos de tus pestañas

01 Lash Art Lash Adhesive | 9700839 5 ml / 0.17 fl. oz. - \$12.50

A luxury LATEX FREE lash adhesive. This lash adhesive is formulated for long-lasting wear and dries clear in seconds.

Un adhesivo de pestañas de lujo SIN LÁTEX. Este adhesivo para pestañas está formulado para un uso duradero y se seca en segundos.

02 Lash Art Mini Lash Scissor | 9700838 \$6.90

A professional stainless steel lash scissor for trimming your lashes to fit your eye shape.

Una tijera de pestañas profesional de acero inoxidable para recortar las pestañas y adaptarlas a la forma de tus ojos.

03 Lash Art Lash Applicator | 9700831 \$6.90

Perfect for applying your lashes. This tool provides control when placing the lash on your lid.

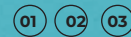
Perfecto para aplicar tus pestañas. Esta herramienta proporciona control al colocar la pestaña en su párpado.



**Lashes Speak Louder
Than Words**
Las pestañas hablan más fuerte que las palabras

04 Lash Art

False Lashes



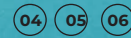
1 Pair | Box

All Types

\$14.90

Faux Mink

False Lashes



1 Pair | Box

All Types

\$19.90

Lashes Set - PK90283
Keep It Cool - 9700833
Glamour - 9700832
Magnificent - 9700834
Wow Drama - 9700835
Mega Volume - 9700837
Studio Effect- 9700836

LIQUID EYE SHADOW

7 Intense long lasting shades
7 Tonos intensos de larga duración

These Liquid Eyeshadows glide effortlessly across your lids and come in 7 beautiful shimmering and metallic shades.

Estas sombras de ojos líquidas se deslizan sin esfuerzo en los párpados y están disponibles en 7 tonos brillantes y metálicos.



Liquid
Eyeshadow

0.23 fl. oz.

All Shades

\$15.90







Wanderlust
Eyeshadow Palette*

0.57 oz.

1302528

\$39.90

WANDERLUST EYESHADOW PALETTE

18 Matte & Jewel Toned Shimmering Shades
18 tonos brillantes mate y saturados

**A palette of soft shades to wear wherever your journey
takes you.**

Una paleta de tonos suaves perfecta para el día a día.



GLAM UP EYESHADOW PALETTE

12 Neutral Matte & Warm Shimmering Shades

12 tonos mate neutrales y cálidos brillantes

Your go-to palette for stylish and neutral looks.
Suitable for all skin types.

La paleta preferida para estilos elegantes y neutrales.
Ideal para cada tipo de piel.



Glam Up Eyeshadow Palette

0.21 oz.

1302527

\$30.90



ICONIC EYESHADOW PALETTE

12 Bright Shimmering & Neutral Matte Shades

12 tonos mate neutrales y brillantes

A palette of fun richly pigmented
shades to fit your every mood.

Una paleta de tonos vivos y ultra
pigmentados. Perfecta para crear
looks con mucha variedad
de estilos.



Iconic Eyeshadow Palette*

0.21 oz.

1302526

\$30.90



*While Supplies Last | Hasta agotar producto

MONO EYESHADOW

Matte, Shimmer & Glitter Shades

Tonos mate, brillantes e iridescentes

This Eyeshadow has a blendable soft and velvety texture that provides crease-free wear.

Una textura suave y aterciopelada que permite que se deslicen las sombras de maravilla sin marcar los pliegues.



Mono Eyeshadow

0.8 oz.

All Shades

\$10.90

04
Coffee
Brown
1301371

12
Baby
Cakes
1301379

13
Stateen
Ribbon
1301380



02



04 Red Glaze
1301494

03 Orange Pop
1301493

02 Brown Sugar
1301492

01 Pink Glow
1301491

Long Lasting
Cream Eyeshadow

0.11 oz.

All Shades

\$12.90

01

LONG LASTING CREAM EYESHADOW

Ultra Pigmented Metallic Shades
Tonos metálicos Ultra Pigmentados

A luxurious cream eyeshadow that illuminates eyes with an intense glow and won't crease or smudge.

Una sombra de ojos en forma de crema que ilumina los ojos con un brillo intenso. El color no se descama ni marca los pliegues.

PRO TO FIT EYESHADOW PRIMER

Eyeshadows that Stay All Day
Las sombras que duran todo el día

A smooth and silky primer that locks in makeup to prevent smudging and keeps your eye shadow looking as fresh as when you applied it.

Un primer suave y sedoso que fija el maquillaje para evitar que se corra y que mantiene las sombras de ojos intactas.



Eyeshadow
Primer

0.11 oz.

1301490

\$10.90



TRIO EYESHADOW KIT

Travel Ready Eyeshadow Palette

Sombras de ojos lista para viajar

Trios of intense shades perfect for creating looks from neutral to smoky to bright and shimmery. The smooth texture makes it easy to apply, and the shades are suitable for all skin tones.

Trios de tonos intensos perfectos para crear looks neutros o ahumados como looks brillantes o iridescentes.



Trio Eyeshadow Kit

0.21 oz.

All Shades

\$21.90

06



EYEBROW LINER

BEFORE



AFTER



Shape Your Brows
Da forma a tus cejas

A gel textured eyebrow pencil to shape and fill in brows with a soft matte finish.

Un lápiz de cejas con textura de gel para dar forma a las cejas con un acabado mate suave.

Eyebrow Liner

0.04 oz.

All Shades

\$10.90



01 Light Brown
1000038



02 Greyish Brown
1000039



03 Dark Brown
1000040

EYEBROW MASCARA

BEFORE



AFTER



TAME YOUR BROWS
Controla tus cejas

A mascara to help tame eyebrows and hold them in place.

Una máscara de pestañas para ayudar a controlar las cejas y mantenerlas en su lugar.

Eyebrow Mascara

0.17 fl. oz.

1301427

\$11.90



01 Blonde
1301506



02 Rich Brown
1301327



03 Dark Brown
1301328



Transparent
1301427

EYEBROW & LASH CAPIXYL™ SERUM

Stronger Lashes & Brows

Pestañas y cejas más fuertes

A high performance serum formulated with a powerful peptide complex, Capixyl™, that enhances and strengthens lashes and brows.

Un suero de ideal formulado con un poderoso complejo de péptidos, Capixyl™, que mejora y fortalece las pestañas y las cejas.

Eyebrow & Lash Capixyl™ increases average length of eyelashes by +29% after 8 months.

El suero para pestañas y cejas con Capixyl™, aumenta el largo en las pestañas en un 29% despues de 8 meses.

Eyebrow & Lash

Capixyl™ Serum

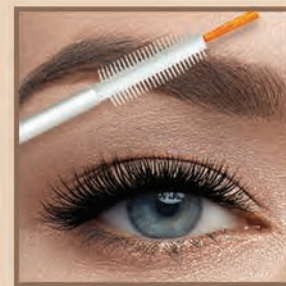
0.4 fl. oz.

1301292

\$27.90

CAPIXYL™ Infused Formula

Fórmula con infusión de CAPIXYL™



Enhances Brows & Lashes
Mejora las cejas y las pestañas

STYLING EYEBROW WAX

Elevate Your Brow Game!

¡Eleva tu look de cejas!

A waterproof formula containing Capixyl™ and almond oil. For fuller, healthier and nourished brows that stay in place all day.

Una fórmula resistente al agua que contiene Capixyl™ y aceite de almendras. Para cejas más llenas, saludables y nutridas que permanecen en su lugar todo el día.

Styling Eyebrow Wax

1.7 fl. oz.

1000549

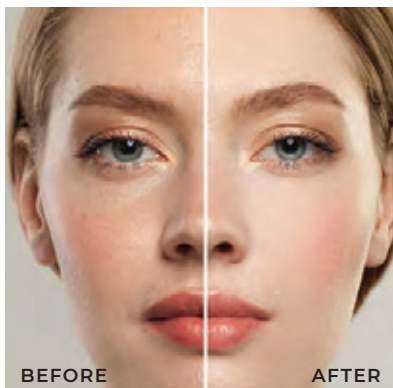
\$29.90



VFX PRO CAMERA READY MAKE-UP PERFECTING PRIMER

A transparent gel with Photo Filter Technology that prepares skin for makeup while helping to minimize the appearance of pores.

Un gel transparente con tecnología Photo Filter que prepara la piel para el maquillaje mientras minimiza los poros y suaviza las líneas finas.



VFX Pro Camera Ready
Make-Up Primer

0.8 fl. oz.

1302449

\$15.90



VEGAN

All Skin Types | Todo Tipo de Piel

VFX PRO CAMERA READY ILLUMINATING STROBE PRIMER

An illuminating cream which prepares skin for makeup and provides a soft glow to boost dull, tired-looking skin. Can be used on face & body.

Una crema iluminadora que prepara la piel para el maquillaje y proporciona un luminosidad para realizar la piel apagada y de aspecto cansado. Puede usarse en rostro y cuerpo.

VFX Pro Camera Ready Primer Strobe

0.8 fl. oz.

1302536

\$15.90



VEGAN

All Skin Types | Todo Tipo de Piel

VFX PRO CAMERA READY FOUNDATION

No Filters Needed!

¡No se necesitan Filtros!

A matte, long-wearing foundation with a velvety texture that contains Photo Filter Technology to reflect and diffuse light for a radiant camera ready look.

Una base mate de larga duración con una textura aterciopelada que contiene la tecnología Photo Filter para reflejar y difundir la luz para un look radiante y listo para la cámara.

Matte Finish



VFX PRO Camera Ready Foundation

1 fl. oz.

All Shades

\$29.90



VEGAN



01 Ivory
1000136



02 Porcelain
1000137



03 Warm Ivory
1000138



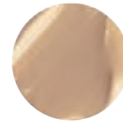
04 Biscuit
1000139



05 Cashmere
1000140



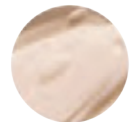
06 Sand
1000141



07 Vanilla
1000142



08 Buff
1000143



09 Cool Beige
1000144



10 Nat. Beige
1000171



11 Toffee
1000172



12 Coffee
1000173



13 Mocha
1000174



14 Latte
1000175



15 Mahogany
1000176



16 Truffle
1000177



17 Dark Cacao
1000178

New Shades

VFX PRO CAMERA READY
FOUNDATION

Long Wearing up to 16 hours

Larga duración de hasta 16 horas

All Skin Types | Todo Tipo de Piel
Full Coverage | Cobertura Completa



NEW
FORMULA*
NEW
SHADES

Oil free & Vegan*

VFX PRO COLOR CORRECTING CREAM TO BALANCE

Corrects and Balances Redness

Ilumina y corrige el enrojecimiento

A cream with green pigments that helps to correct redness as well as hides imperfections to even skin and create the perfect makeup canvas.

Una crema con pigmentos verdes que ayuda a corregir el enrojecimiento de la piel, además de ocultar las imperfecciones y emparejar la piel para crear la base de maquillaje perfecta.



VFX Pro CC Cream

Green

0.85 fl. oz.

1302716

\$16.90

All Skin Types | Todo Tipo de Piel



VFX PRO COLOR CORRECTING CREAM TO BRIGHTEN

Brightens & Corrects Dullness

Ilumina y corrige la opacidad

A cream with purple pigments that helps to correct and brighten dull-looking skin as well as hides imperfections to create the perfect makeup base.

Una crema con pigmentos morados que ayuda a corregir e iluminar la piel de apariencia apagada, además de ocultar las imperfecciones para crear la base de maquillaje perfecta.



VFX Pro CC Cream

Purple

0.85 fl. oz.

1302715

\$16.90

All Skin Types | Todo Tipo de Piel

COLOR CONTROL SKIN PERFECTING BALM

Mineral Enriched

Enriquecimiento con minerales

This lightweight multi-mineral enriched formula helps balance and correct skin tone to provide flawless coverage and a natural semi-matte finish.

Esta fórmula ligera enriquecida con multiminerales ayuda a equilibrar y corregir el tono de la piel para brindar una cobertura impecable y un look semimate natural.



CC Cream

1.7 fl. oz.

All Shades

\$16.90

All Skin Types | Todo Tipo de Piel
Medium to Full Coverage | Cobertura
Media a Completa



01 Light
51104172



04 Medium to Dark
51104061



02 Light to Medium
51104060



05 Tan
1000380



03 Medium
51104173



06 Deep
1000381



STAY MATTE FOUNDATION

Stay Matte Foundation

1 fl. oz.

All Shades

\$12.90

Mineral Enriched

Enriquecimiento con minerales

A light-weight mineral enriched matte formula that helps to control excess oil and sebum while minimizing pores.

Una fórmula mate ligera enriquecida con minerales que ayuda a controlar el exceso de grasa y sebo mientras minimiza la apariencia de los poros.



01 Light Ivory
1302492



02 Porcelain
1302493



03 Natural
1302494



04 Sand Beige
1302495



05 Sun Tan
1302496



06 Soft Beige
1302497



09 Light Beige
1302498



103 Latte
1302453



105 Machiatto
1302455

Oily to Combination Skin | Piel Grasosa a Mixta
Full Coverage | Cobertura Completa

COLOR CONTROL SKIN PERFECTING POWDER

Mineral Enriched

Enriquecimiento con minerales

This lightweight multi-mineral enriched formula helps balance and correct skin tone to provide flawless coverage and a natural velvety matte finish.

Esta fórmula ligera enriquecida con multiminerales ayuda a equilibrar y corregir el tono de la piel para brindar una cobertura impecable y un look semimate natural.



BB Powder

0.5 oz.

All Shades

\$14.90



01 Light
1302343



02 Medium
1302345

All Skin Types | Todo Tipo de Piel
Medium to Full Coverage | Cobertura Media a Completa



SKIN PERFECTING BEAUTY BLAM

Visibly Flawless

Visiblemente impecable

An ultra-lightweight formula that helps cover skin imperfections while hydrating and providing a smooth semi-matte finish.

Una fórmula ultraligera que ayuda a cubrir las imperfecciones de la piel mientras la hidrata sin obstruir los poros y proporciona un look suave y semi-mate.



BB Cream

1.7 oz.

All Shades

\$15.90

Oily to Combination Skin | Piel Grasosa a Mixta
Medium to Full Coverage | Cobertura Media a Completa



01 Light
51104170



04 Medium to dark
51104059



02 Light to medium
51104058



05 Tan
1000378



03 Medium
51104171



06 Deep
1000379



TERRACOTA HIGHLIGHTING POWDER



Luminous Face
Rostro luminoso

A high-impact light reflecting baked powder ideal for highlighting and strobing techniques.

Polvo reflectante de luz de alto impacto ideal para técnicas de highlighting and strobing.

Terracota
Highlighting Powder

0.35 oz.

1302466

\$27.90



TERRACOTA PORCELAIN POWDER



01 Light Medium
1302467



02 Medium Dark
1302468

Porcelain Skin
Piel de porcelana

A ultra-lightweight full-coverage baked mineral powder that helps to create bright and even toned skin.

Un polvo mineral ultraligero de cobertura total que proporciona una piel luminosa y una tez uniforme.

Terracotta Porcelain
Powder

0.35 oz.

All Shades

\$32.90



TRANSPARENT POWDER

Shine-Free, Matte Finish

Sin brillo, look mate

Sets makeup and mattifies skin giving you a smooth flawless finish while keeping you shine-free for hours.

Fija el maquillaje y matifica la piel dándote un look suave e impecable mientras te mantiene libre de brillo durante horas.

Transparent

Powder

0.49 oz.

1301391

\$14.90



Shine Free, Flawless, Silky Texture Finish
Sin Brillo, Impecable, Acabado con Textura Sedosa

FACE PERFECTING POWDER

Full Coverage, Matte Finish

Cobertura total, look mate

Powder compact with a silky texture that mattifies and evens out skin tone while providing a smooth look and soft natural finish that lasts all day.

Polvo compacto de textura sedosa que matifica y unifica el tono de la piel a la vez que proporciona un aspecto suave y un acabado natural suave que dura todo el día.

Face Perfecting

Powder

0.49 oz.

All Shades

\$12.90



01 Cool Light
1000167

02 Warm Light
1000168

03 Neutral Medium
1000166

04 Warm Medium
1302478

05 Cool Dark
1302479

06 Warm Dark
1302480

TENDER BLUSH ON

Perfect Pop of Color

Pop de color perfecto

A highly pigmented blush with a silky texture that blends easily and gives natural looking results.

Un Rubor altamente pigmentado con una textura sedosa que se difumina fácilmente para un resultado natural.



Silky Texture
Texture Sedosa

Tender Blush On

0.16 oz.

All Shades

\$9.90



01 Modern Ballet
1302481



02 Fresh Peach
1302491



06 Rose Jam
1302483



09 Peach Blossom
1302485



15 Sugar Pink
1302486



18 Pink Lily
1302488

Shimmer Effect

Shimmer Effect



CONTOUR & HIGHLIGHT

Define & Highlight

Define y resalta

Soft creme stick ideal for sculpting, highlighting, and contouring your face. Can be applied to cheekbones, eyes, face, and can be applied alone or on top of makeup to emphasize your look.

Un stick en forma de crema ideal para resaltar y para hacer contouring de tu rostro. Se puede aplicar en los pómulos, los ojos y el rostro, y se puede aplicar solo o sobre el maquillaje para su apariencia.



01 Glow & Highlight Stick

Gold Flash

0.25 oz. | 1302516

\$14.90

02 Glow & Highlight Stick

Stick Rose Flash

0.25 oz. | 1302517

\$14.90

01

02



03 Contour Stick

0.25 oz. | 1302424

\$13.90

04 Highlight Stick

0.25 oz. | 1302425

\$13.90

03

04



VFX PRO LIQUID CONCEALER

Neutralizes Imperfections

Neutraliza las imperfecciones

Discover a creamy texture that blends easily into the skin, covers dark circles and hides all imperfections. The formula contains Senna extract, a botanical alternative to hyaluronic acid that provides hydration for smooth, and rested look.

Descubre una textura cremosa que se mezcla fácilmente con la piel, cubre las ojeras y oculta todas las imperfecciones. La fórmula contiene extracto de Senna, una alternativa al ácido hialurónico que proporciona hidratación para una piel lisa y fresca.



VFX Pro
Liquid Concealer

0.24 fl. oz.

All Shades

\$14.90

Conceal, Brighten & Retouch
Ocultar, Ilumina y Retouch



VEGAN



FULL COVERAGE STICK CONCEALER

A concealer to perfectly match your skin tone for a radiant look. If your skin is light choose lighter shades, for darker skin tones try Soft Orange.

Un corrector que combina perfectamente con el tono de tu piel para una apariencia radiante. Si tu piel es clara, elige tonos más claros, para tonos de piel más oscuros, prueba Soft Orange.



01 Bisque
1302521



02 Soft orange
1302522



03 Light Ivory
1302523



04 Pure Beige
1302524



Full Coverage
Skin Concealer

0.14 fl. oz.

All Shades

\$11.90



03 Light Ivory
has been used on the model | 61



PEACH BITE PALETTE

Day or Night Makeup

Maquillaje de día y de noche

A warm peach-toned Bronzer, Highlighter and Blush trio featuring matte and pearlescent powders.

Un cálido trío de bronceador, iluminador y colorete en tonos melocotón con polvos mates y nacarados.

Peach Bite Palette

0.52 fl. oz.

1302520

\$19.90



FACE SCULPTING PALETTE

Highlighter and Bronzer

Iluminador y Bronceador

This trio adds structure and dimension to your look with two shades of Bronzer to contour and a Brightening Powder to enhance the highest points on the face.

Este trío agrega estructura y dimensión a tu look con dos tonos de bronceador para hacer contouring y un Polvo Iluminador para realzar los puntos más altos del rostro.

Face Sculpting Palette

0.52 fl. oz.

1302511

\$21.90





HIGHLIGHTER PALETTE

Day or Night Makeup

Maquillaje de día y de noche

Three shining bright tones that will quickly become your go-to highlighters for day or night.

Tres tonos luminosos que rápidamente se convertirán en tu producto preferido para el día o la noche.

Highlighter Palette

0.52 fl. oz.

1302518

\$18.90



3 IN 1 FACE PALETTE

Highlighter & Bronzer

Iluminador y bronceador

A Blush, Highlighter and Bronzer trio that will be indispensable in your makeup bag.

Un trío de Rubor, Iluminador y Bronceador que se convertirá indispensable en tu bolsa de maquillaje.

3 in 1 Face Palette

0.52 fl. oz.

1302519

\$18.90





MAKE UP TIME LOCKER SETTING SPRAY

Protect Your Makeup
Proteje tu maquillaje

A lightweight spray to protect and set your look. Apply after makeup. Shake the bottle and close your eyes then mist onto your finished look from about a foot away.

Un spray ligero para proteger y fijar tu look. Aplicar después del maquillaje. Agitar bien y aplicar unos pequeños toquesitos a unos 20 cm de la cara después de maquillarte.



Time Locker Spray

3.9 fl. oz.

1302417

\$10.90

Lightweight Formula
Fórmula Ligera





Micellar
Cleansing Water

7.6 fl. oz.	1302711
-------------	----------------

\$12.90

For Daily Cleansing
Para la limpieza diaria



Bi-Phased
Makeup Remover

7.6 fl. oz.	1302712
-------------	----------------

\$12.90

For Makeup removal
Para quitar el maquillaje



SENSI-WIPES MAKEUP REMOVER



All Skin Types

Todo tipo de piel

Alcohol Free - No Parabens Added
Sin alcohol, sin parabenos añadidos

Sensi-Wipes
Makeup Remover

20 PCS	1201006
--------	----------------

\$4.90



FARMASI NAIL COLOR

Your Own Nail Salon, Right at Home!
 ¡Tu propio salón de belleza desde tu casa!

Stronger, well-groomed and bright nails.
 Uñas más fuertes, cuidadas y brillantes.



Cuticle Remover Oil

0.37 fl. oz.	1304314
--------------	----------------

\$9.90

Calcium Nail Hardener

0.37 fl. oz.	1304378
--------------	----------------

\$10.90

Nail Color

Glossy Top Coat

0.37 fl. oz.	1304345
--------------	----------------

\$7.90

CLASSIC NAIL



Innocent
1304374

Pink Panther
1304376

Lady Marmalade
1304379

NUDE SERIES



03
Ballerina
1304366

06
Flint Dash
1304369

07
Pretty Cool
1304395

08
Light Ruby
1304396

09
Chocolate
Souffle
1304397

10
It Girl
1304398

11
Creme
Brulee
1304399

12
Peach
Sorbet
1304400

14
Frosty
1304426

FARMASI NAIL COLOR

Magical Colors

Colores mágicos

Classic Nail Color

0.37 fl. oz.	All Shades
--------------	-------------------

\$6.90

Nude Nail Color

0.37 fl. oz.	All Shades
--------------	-------------------

\$6.90

BEAUTY ACCESSORIES

Accessories for everyone.
Accesorios para todos.



01. Eye Shadow Brush
9700634
\$5.90



02. Two-Sided Eyebrow Brush
9700637
\$5.90



03. Foundation Brush
9700636
\$6.90



04. Two-Sided Facial Brush
9700638
\$6.90



05. Flat Kabuki Brush
9700847
\$8.90



06. Eyeshadow Blending Brush
9700845
\$5.90



07. Concealer Buffer Brush
9700846
\$8.90



09 10

09
Oval Brush Big
9700645
\$19.90

10
Oval Brush Small
9700646
\$16.90



13
Miracle Cleansing Sponge
9700650
\$7.90



11 12

11
Eyelash Curler
9000292
\$5.90



12
Makeup Magic Sponge
9700647
\$6.90



14
Detangling Hair Brush
9700649
\$8.90

WOMEN FRAGRANCES



Hera EDP
For Women

2.20 fl. oz.

1107391

\$34.90

Top Notes:

Currant, Tangerine,
Neroli

Middle Notes:

Jasmine, Orange,
Flower, Woody Notes

Bottom Notes:

Amber, Tonka, Must



Chase Me EDP
For Women

1.70 fl. oz.

1107369

\$34.90

Top Notes:

Tangerine, Jasmine
Raspberry

Middle Notes:

Pink Rose, Orange,
Flower

Bottom Notes:

Vanilla, Sandalwood,
Patchouli



Madame EDP

For Women

1.70 fl. oz.

1107433

\$39.90

Top Notes:

Tangerine, Lemon,
Orange, Blossom,
Raspberry

Middle Notes:

Ylang Ylang, Jasmine,
Musk

Bottom Notes:

Must, Amber, Patchouli

Reina EDP

For Women

2.2 fl. oz.

1107274

\$34.90



Top Notes:

Bergamot, Apple

Middle Notes:

Geranium, Pink Pepper

Bottom Notes:

Patchouli, Leather

FARMASI PROFESSIONAL KERATIN SERIES

Smooth, Luxurious Hair

Un cabello suave y brillante

Enriched with a transformative Keratin Complex and amino acids, this series revitalizes hair by providing nourishment that brings out softness and shine, leaving you with beautiful, luscious hair.

Esta serie enriquecida con complejo de queratina y aminoácidos le da al cabello un brillo y nutrición increíbles y deja el cabello con una sensación de suavidad y revitalización.



BEFORE

AFTER

Get Ultra-Smooth, Shiny Hair! Farmasi Professional Hair Care contains Keratin Complex with Amino Acids.

Consigue un cabello Ultra-Suave y brillante. Farmasi Professional Hair Care contiene complejo de Keratina con aminoácidos.



Strong & Healthy Hair
Cabello fuerte y saludable



Keratin Series
Shampoo

12.2 fl. oz.	51108199
--------------	-----------------

\$11.90



Keratin Series
Hair Mask

6.7 fl. oz.	51109118
-------------	-----------------

\$14.90



Keratin Series
Hair Serum

1 fl. oz.	51108182
-----------	-----------------

\$15.90



Keratin Series
Hair Spray

3.9 fl. oz.	51108181
-------------	-----------------

\$10.90



WHITENING TOOTH PASTE

For a Brighter Smile

Para una sonrisa más brillante

Works to remove superficial teeth stains and dramatically brighten your smile. With fluoride, this gentle tooth paste helps to remove plaque and to prevent cavities, while supporting your gum health. Now, you can smile with confidence, knowing that your teeth are whiter, brighter, and healthier than ever before.

Ayuda a eliminar las manchas superficiales de los dientes y al mismo tiempo ayuda a mantener saludables las encías. Enriquecida con flúor, esta pasta de dientes ayuda a eliminar cualquier acumulación de placa que mejorará la apariencia de su sonrisa y protegerla contra las caries.



Natural Ingredients:

Aloe Vera, Ginseng Extract, Tea Tree Oil, Miswak Root

Aloe vera, extracto de ginseng, aceite de árbol de té, raíz de miswak



Whitening
Toothpaste

3.95 oz.

1700001

\$15.90

FARMASI SOAPS

All Skin Types
Todo Tipo de Piel

Traditional Soaps

Jabones tradicionales



Hammam

Traditional Soap

4.4 oz.

1119072

\$5.90



Pearl

Traditional Soap

4.4 oz.

1119096

\$5.90



Calendula Soap

4.4 oz.

1000329

\$5.90



Tea Tree Soap

4.4 oz.

1000330

\$5.90



SHIELD MAN SERIES

Elite Grooming Products for Men Productos élite para hombres

The power of Shield Man comes from the new active complex of 10 amino acids to strengthen and protect hair and skin.

El poder de Shield Man proviene del nuevo complejo activo de 10 aminoácidos para fortalecer y proteger el cabello y la piel.



Shield Man
Shampoo

7.6 fl. oz.	1119082
-------------	----------------

\$10.90



Shield Man
Body Wash

7.6 fl. oz.	1119086
-------------	----------------

\$11.90



Shield Man
Styling Matte Hair Wax

3.7 fl. oz.	1119084
-------------	----------------

\$14.90



Shield Man
Beard & Moustache Oil

1 fl. oz.	1119083
-----------	----------------

\$16.90

Men's Products

Producto para hombres



Shield Man
Face & Body Soap

3.5 oz.	1119079
---------	----------------

\$5.90



Shield Man
Shaving Foam

6.8 fl. oz.	1119081
-------------	----------------

\$9.90



Shield Man
Face & Eye Cream

1.7 fl. oz.	1119085
-------------	----------------

\$12.90



Shield Man
After Shave Lotion

3.4 fl. oz.	1119080
-------------	----------------

\$12.90

MEN FRAGRANCES



Monsieur EDP

For Men

3.4 fl. oz.

1107434

\$39.90

Top Notes:

Coriander,
Black Pepper

Middle Notes:

Rockrose, Leather,
Tobacco

Bottom Notes:

Vetiver, Cedarwood,
Benzoin



Gaucho EDP

For Men

3.4 fl. oz.

1107025

\$35.90

Top Notes:

Bergamot, Cardamon,
Basil

Middle Notes:

Lavander, Rose, Geranium,
Clove, Sage

Bottom Notes:

Musk, Sandalwood,
Cedarwood

MODERN AND Sophisticated!

A blend of marine breeze, sandalwood, and sensual musk wood notes for an unforgettable fragrance.

Una mezcla de brisa marina, sándalo y notas sensuales de madera de almizcle para una fragancia inolvidable.

Baoli EDP

For Men

3.4 fl. oz.

1107522

\$39.90

Top Notes:

Lavander, Clary
Sage, Bitter
Orange

Middle Notes:

Green Notes, Fir, Lily
of the Valley

Bottom Notes:

Oakmoss, Vetiver,
Ambery





DR.C.TUNA

EXPLORE THE COLLECTION

farmasius.com

Resurface Series	<u>06 - 15</u>	Haircare Series	<u>50-55</u>
Age Reversist Series	<u>16 - 21</u>	Massage Series	<u>56</u>
Lumi Radiance Series	<u>22 - 25</u>	Intimate Care Series	<u>58</u>
Acne Collection	<u>26 - 29</u>	Foot Care Series	<u>58</u>
Aqua Collection	<u>30 - 33</u>	Sun Care Series	<u>59</u>
Calendula Series	<u>34 - 39</u>	NutriPlus Coffee	<u>60-67</u>
Tea Tree Series	<u>40 - 43</u>	Mr. Wipes Homecare Series	<u>68-71</u>
Activated Charcoal Series	<u>44 - 45</u>		
Skincare Guide	<u>46 - 49</u>		

A Life Dedicated to Health and Success

Una vida dedicada a la salud y el éxito



1923 - ∞

Dr. Cevdet Tuna, one of Turkey's first doctors, started FARMASI over 72 years ago. He established one of the first pharmaceutical factories in Turkey, Tege Pharmaceutical Factory. Dr. Tuna formulated some of the first Turkish medicinal products including: cough syrup, painkillers, burn ointment, and cough lozenges. Since 1950, when Dr. Cevdet Tuna entered the beauty and health sector, FARMASI had already established itself as an innovative, reliable, sustainable, and leading brand that best understands the needs of both its customers and Beauty Influencers. Our approach has always been synonymous with quality control, from raw material to finished product, associated with a rigorous scientific approach. Today, FARMASI is committed to perpetuating the values of its founder: nature, authenticity, quality, trust and family.

El Dr. Cevdet Tuna, uno de los primeros médicos de Turquía, fundó FARMASI hace más de 71 años. Estableció una de las primeras fábricas farmacéuticas en Turquía, Tege Pharmaceutical Factory. El Dr. Tuna formuló algunos de los primeros medicamentos turcos que incluyen: jarabe para la tos; analgésicos; pomada para quemaduras y pastillas para la tos. Desde 1950, cuando el Dr. Cevdet Tuna entró en el negocio de la belleza y sector de la salud, FARMASI ya se había establecido como una marca innovadora, confiable, sostenible y líder que como empresa mejor entiende necesidades tanto de sus clientes como de sus empresarios. Nuestro enfoque siempre ha sido la calidad, desde las materias primas hasta el producto final, pasado por un control científico riguroso. Hoy, Farmasi se compromete a perpetuar los valores de su fundador: naturaleza, autenticidad, calidad, confianza y familia.



Dr. Cevdet Tuna

Founder

DR.C.TUNA

Golden Rules

Our formulations exclude ingredients that are undesirable for our health and the planet.
Nuestras formulaciones excluyen ingredientes que pueden causar daño a nuestra salud y al planeta.



Most of our products are Vegan



Our products don't contain Heavy Metals



Our products don't contain Paraben



Our products are non GMO



Our products are not tested on animals



Our products are dermatologically tested

SLS

SLS free



Our products don't contain Gluten

@farmasiusa

f farmasiusaofficial

Resurface

Series

Anti-Aging Anti-Edad

Concern

By the time you've reached your 35th birthday, your body produces about 15% less collagen, leaving your skin vulnerable to the signs of aging. Loss of elasticity leads to sagging skin and fine lines and wrinkles begin to appear and deepen. As time passes your skin's cutaneous surface breaks down, and your skin becomes less smooth, more dull and prone to damage.

Cuando cumples 35 años, tu cuerpo produce aproximadamente un 15% menos de colágeno, lo que deja tu piel vulnerable a los signos del envejecimiento. La pérdida de elasticidad provoca la flacidez de la piel y las líneas finas y las arrugas comienzan a aparecer más prominentes. A medida que pasa el tiempo, la superficie cutánea de la piel se deteriora, la piel se vuelve menos suave, más opaca y más propensa a sufrir daños.

Solution

Resurface is our most powerful anti-aging formula yet, targeting deep wrinkles, fine lines, and age spots. With advanced and powerful ingredients that work synergically, this routine helps to minimize visible signs of aging while being gentle to the skin. Turn back time, regenerate your skin, and erase visible signs of aging. From targeting wrinkles and loss of firmness, to uneven tone and texture, Resurface Series is here to help skin look more youthful.

Resurface es nuestro Regimen para visibles signos del envejecimiento como las arrugas profundas, las líneas finas y las manchas. Con ingredientes avanzados y poderosos que funcionan sinérgicamente, esta rutina ayuda a minimizar los signos visibles del envejecimiento mientras es suave para la piel. Detenga el tiempo, regenera tu piel y borra los signos visibles del envejecimiento. Desde arrugas y pérdida de firmeza hasta un tono desigual, Resurface Series está aquí para ayudar a que tu piel luzca más joven.

Key Ingredients:

Chlorella Vulgaris Extract, Chicory Leaf Extract, Niacinamide, Retinol, Vitamin C. Extracto De Chlorella Vulgaris, Extracto de Hoja de Achicoria, Niacinamida, Retinol, Vitamina C



DR.C.TUNA Resurface

Series

NEW



Resurface

Anti-Aging
Anti-Edad



Chicory Leaf Extract: A botanical active with a clinical efficacy similar to Retinol that helps to refine skin surface, contributes to skin vitality and beauty. The skin appears revitalized and free from the most visible signs of skin ageing.

Dr. C. Tuna Resurface

Refining Cleanser

3.4 fl. oz.

1000277

\$40.00



Niacinamide: Helps to reduce the appearance of skin blemishes and visibly brightens skin tone.

Auvergne Volcanoes Mineral Water: Hot spring water that helps to reinforce skin barrier; soothes and moisturize the skin.

Chlorella Vulgaris Extract: Lutein rich natural antioxidant which helps to nourish and protect the skin from harmful actions of free radicals. It helps to decrease the amount of wrinkles and improves the skin's quality.

Chamomile Water: Helps to calm, moisturize and soothe the skin.

Sodium PCA: A component of skin's natural moisturizing factor that hydrates by attracting water to and trapping it in the skin while also helping to support skin's protective barrier.

Dr. C. Tuna Resurface

Hydrasooth Essence

3.4 fl. oz.

1000278

\$45.00

All Skin Types | Todo Tipo de Piel
Age 35+ | Edad 35+



UV Protection SPF 30 (UVA/UVB)

Chicory Leaf Extract: A botanical active with a clinical efficacy similar to Retinol that helps to refine skin surface, contributes to skin vitality and beauty. The skin appears revitalized and free from the most visible signs of skin ageing.

Niacinamide: Helps to reduce the appearance of skin blemishes and visibly brightens skin tone.

Chlorella Vulgaris Extract: Lutein rich natural antioxidant which helps to nourish and protect the skin from harmful actions of free radicals. It helps to decrease the amount of wrinkles and improves the skin's quality.

Dr. C. Tuna Resurface

Essential Day Cream

1.7 fl. oz.

1000280

\$70.00



Chlorella Vulgaris Extract: Lutein rich natural antioxidant which helps to nourish and protect the skin from harmful actions of free radicals. It helps to decrease the amount of wrinkles and improves the skin's quality.

Chicory Leaf Extract: A botanical active with a clinical efficacy similar to Retinol that helps to refine skin surface, contributes to skin vitality and beauty. The skin appears revitalized and free from the most visible signs of skin ageing.

Sodium PCA: A component of skin's natural moisturizing factor that hydrates by attracting water to and trapping it in the skin while also helping to support skin's protective barrier.

Niacinamide: Helps to reduce the appearance of skin blemishes and visibly brightens skin tone.

Dr. C. Tuna Resurface

Advanced Eye Cream

0.5 fl. oz.

1000282

\$40.00

Resurface Retinol Reviving Serum

POWERFUL ANTI-AGING FORMULA
FÓRMULA PODEROSA ANTIEDAD



THE SCIENCE OF SKIN CARE STARTS WITH RETINOL
LA CIENCIA DEL CUIDADO DE LA PIEL COMIENZA
CON RETINOL

An advanced face serum that helps even out the skin tone and create a more supple and plump appearance, all while reducing the visible signs of aging.

Un Suero Facial avanzado que permite lograr una piel visiblemente más uniforme, suave, hidratada al mismo tiempo que ayuda a la piel a contrarrestar los signos de la edad.

Resurface Retinol Blend: This unique and gentle Retinol blend supported with Vitamin C is able to fight the visible signs of aging by stimulating collagen synthesis. It decreases the appearance of wrinkles and contributes to a bright, smooth and renewed appearance.

Chlorella Vulgaris Extract: Lutein rich natural antioxidant which helps to nourish and protect the skin from harmful actions of free radicals. It helps to decrease the amount of wrinkles and improves the skin's quality.

Squalene: Natural squalene of vegetable origin. Works like skin's own oil to prevent moisture loss and restore suppleness.

Fruitmix (Blueberry, Sugar Cane, Orange, Lemon & Sugar Maple Extract): Contributes a smooth, brighter complexion with a diminished appearance of unwanted wrinkles.

\$75.00

Dr. C. Tuna Resurface
Retinol Reviving Serum
1 fl. oz. **1000279**

Resurface

Reset Night Cream

INTENSE REPAIR

REPARACIÓN INTENSIVA

REPAIR, RENEW AND STRENGTHEN

REPARA, RENUEVA Y FORTALEZE

Renew your skin with this nurturing night cream that improves firmness and hydration, reduces the appearance of lines to reveal smooth, radiant-looking skin.

Renueva tu piel con esta crema de noche nutritiva que mejora la firmeza e hidratación, reduce la apariencia de arrugas para revelar una piel suave y radiante.

Resurface Retinol Blend: This unique and gentle Retinol blend supported with Vitamin C can fight the visible signs of aging by stimulating collagen synthesis. It decreases the appearance of wrinkle and contributes to a bright, smooth and renewed appearance.

Chlorella Vulgaris Extract: Lutein rich natural antioxidant which helps to nourish and protect the skin from harmful actions of free radicals. It helps to decrease the amount of wrinkles and improves the skin's quality.

Chicory Leaf Extract: A botanical active with a clinical efficacy similar to Retinol that helps to refine skin surface, contributes to skin vitality and beauty. The skin appears revitalized and free from the most visible signs of skin ageing.

Squalene: Natural squalene of vegetable origin. Works like skin's own oil to prevent moisture loss and restore suppleness.

Shea Butter: Helps to hydrate and soothe the skin.

\$70.00

**Dr. C. Tuna Resurface
Reset Night Cream**

1.7 fl. oz. **1000281**



Resurface

Clinical Test Results*

AFTER 4 WEEKS

Dr. C. Tuna Resurface Series delivers premium anti-aging solutions to reveal your skin's youth and radiance.

Dr. C. Tuna Resurface Series ofrece excelentes soluciones anti-edad para revelar una piel joven y radiante.



Dr. C. Tuna Resurface
Refining Cleanser

-10%

REDUCTION OF
WRINKLES*

-10 reducción de arrugas*

+172%

IN ELASTIN LEVELS**

+172 en niveles de elastina**



Dr. C. Tuna Resurface
Hydrasooth Essence

-19%

REDUCTION OF
WRINKLES*

-19 reducción de arrugas*

+198%

IN ELASTIN LEVELS**

+198 en niveles de elastina**

*3rd Party Laboratory Apparatus Test Results

**p<0.001 student t-test. Tested and approved by an internationally recognized independent and accredited laboratory.

*3rd Party Laboratory Apparatus Test Results

**p<0.001 student t-test. Tested and approved by an internationally recognized independent and accredited laboratory.



Dr. C. Tuna Resurface
Essential Day Cream

-17%
REDUCTION OF
WRINKLES*
-17 reducción de arrugas*

+1038%
IN ELASTIN LEVELS
PROVIDES 6+ HRS OF
HYDRATION**
+1038% en nivel de elastina
Proporciona más de 6 horas
de hidratación**

*3rd Party Laboratory Apparatus Test Results

**p<0.01 Student T-Test. Tested and approved by an internationally recognized independent and accredited laboratory



Dr. C. Tuna Resurface
Advanced Eye Cream

-17%
REDUCTION
CROW'S FEET*
-17 reducción en patas de
gallo*

+215%
IN ELASTIN LEVELS**
+215% en niveles de elastina**

*3rd Party Laboratory Apparatus Test Results

**p<0.01 Student T-Test. Tested and approved by an internationally recognized independent and accredited laboratory

Resurface

Clinical Test Results*

AFTER 4 WEEKS

Dr. C. Tuna Resurface Series delivers supreme anti-aging solutions to reveal your skin's youth and radiance.

Dr. C. Tuna Resurface Series ofrece excelentes soluciones anti-edad para revelar una piel joven y radiante.



Dr. C. Tuna Resurface Retinol Reviving Serum

-14%

REDUCTION OF
WRINKLES*

-14 reducción de arrugas*

+26%

IMPROVEMENT IN
SKIN ELASTICITY*

+26 en niveles de elastina*

+876%

SYNTHESIS TYPE I
COLLAGEN**

+876% síntesis de colágeno de
tipo I**

*3rd Party Laboratory Apparatus Test Results

**p<0.01 Student T-Test. Tested and approved by an internationally recognized independent and accredited laboratory.

Dr. C. Tuna Resurface
Reset Night Cream

-20%

REDUCTION OF
WRINKLES*

-20 reducción de arrugas*

+34%

IMPROVEMENT IN
SKIN ELASTICITY*

+34 en niveles de elastina*

+253%

SYNTHESIS TYPE I
COLLAGEN**
PROVIDES 6+ HRS OF
HYDRATION***

+253% síntesis de colágeno de
tipo I**
Proporciona hasta 6 horas de
hidratación***



*3rd Party Laboratory Apparatus Test Results

**p<0.01 Student T-Test. Tested and approved by an internationally recognized independent and accredited laboratory.

***<0.001 Student T-Test. Tested and approved by an internationally recognized independent and accredited laboratory.

Age Reversist

Series

Fine Lines & Wrinkle Prevention

Prevención de Arrugas y Líneas Finas

Concern

Collagen and elastin fibers are the basis of youthful looking skin. In young skin, collagen and elastin production are at optimum levels and skin looks plump and smooth. As we age, the collagen and elastin production decreases and the skin loses elasticity, causing wrinkles and fine lines.

Las fibras de colágeno y elastina son la base de una piel joven. En pieles jóvenes, la producción de colágeno y elastina se encuentra en un nivel óptimo, y la piel luce sana y suave. Con el tiempo, a medida que envejecemos, la estructura de soporte se debilita, la piel pierde elasticidad y disminuye la producción de colágeno, lo que provoca arrugas y líneas finas.

Solution

Prevent signs of aging with our Age Reversist Series. This Routine works to stimulate collagen synthesis to nourish the skin and helps to protect the moisture barrier as well as strengthen the skin against developing fine lines and wrinkles. Stay youthful and put your skin in a time capsule with this preventative skincare line!

Previene los signos del envejecimiento con nuestra serie Age Reversist. Este régimen ayuda a estimular la síntesis de colágeno para nutrir la piel y proteger la barrera de la piel. Ayuda a fortalecer la renovación celular y previene la aparición de líneas finas y arrugas. Preserva una apariencia juvenil con esta línea preventiva!cutánea se fortalece y las arrugas y líneas finas se reducen.

Key Ingredients:

Organic Chamomile Water, Organic Hamamelis Water, Marine Plankton Extract, Laminaria Digitata, Sea Water & Hydrolyzed Algin, Sodium Carrageenan, Marine Water | Agua de manzanilla orgánica, agua de hamamelis orgánica, extracto de plancton marino, laminaria digitata, Agua de mar y algina hidrolizada, carragenina de sodio, agua de mar



Age Reversist

Series



Age Reversist

Fine Lines & Wrinkle Prevention

Prevención de Arrugas y Líneas Finas



Laminaria Digitata Extract: A concentrated Seaweed Extract that supports collagen production and helps to smooth wrinkle appearance.

Sodium Carrageenan: Concentrate of Scandinavian red algae that helps to protect skin from dehydration caused by pollution. It helps to stimulate epidermal hyaluronic acid and increase ceramide synthesis for intense hydration.

Kaolin Clay: Gently cleanses by exfoliating skin and removing dead cells and flaky, dry skin.

PolyLactic Acid: Starch-based exfoliating agent with a mechanical action that removes skin impurities for deep skin cleansing.

Dr. C. Tuna Age Reversist Exfoliating Cleanser

2.7 fl. oz.

1000276

\$35.00



Sodium Carrageenan: Concentrate of Scandinavian red algae that helps to protect skin from dehydration caused by pollution. It helps to stimulate epidermal hyaluronic acid and increase ceramide synthesis for intense hydration.

Organic Chamomile Water: Helps to calm, moisturize and soothe the skin.

Organic Hamamelis Water: Also known as witch hazel. Supports to clarify the skin and minimize appearance of pores.

Dr. C. Tuna Age Reversist Beauty Essence Tonic

3.4 fl. oz.

1000270

\$35.00

All Skin Types | Todo Tipo de Piel

Age: 25+ | Edad: 25+



Sea Water & Hydrolyzed Algin: An energizing marine duo enriched with sea water and anti-pollution biopolymer that soothes the skin

Dr. C. Tuna Age Reversist
Eye Cream

0.5 fl.oz.

1000273

\$30.00



Laminaria Digitata Extract: A concentrated Seaweed Extract that supports collagen production and helps to smooth the appearance of wrinkles.

Sodium Carrageenan: Concentrate of Scandinavian red algae that helps to protect skin from dehydration caused by pollution. It helps to stimulate epidermal hyaluronic acid and increase ceramide synthesis for intense hydration.

Sodium PCA: A component of skin's natural moisturizing factor that hydrates by attracting water to and trapping it in the skin while also helping to support skin's protective barrier.

Dr. C. Tuna Age Reversist
Serum

1 fl. oz.

1000272

\$60.00



Laminaria Digitata Extract: A concentrated Seaweed Extract that supports collagen production and helps smooth the appearance of wrinkles.

Sodium Carrageenan: Concentrate of Scandinavian red algae that helps to protect skin from dehydration caused by pollution. It helps to stimulate epidermal hyaluronic acid and increase ceramide synthesis for intense hydration.

Dr. C. Tuna Age Reversist
Rich Moisturizer

1 fl. oz.

1000271

\$35.00

Age Reversist

All Night Beauty Mask

INTENSE OVERNIGHT MOISTURE & RADIANCE

PROVIDES

+52%

COLLAGEN INCREASE*

Proporciona un 52% de aumento de colágeno.*



This unique mask contains an advanced Vitamin C complex with Ascorbic Acid, that helps to fight against free radicals, promotes brighter skin, and supports collagen stimulation while you sleep.

Esta mascarilla única contiene un complejo avanzado de vitamina C con ácido ascórbico, que ayuda a combatir los radicales libres, promueve una piel más luminosa y favorece la estimulación del colágeno mientras duermes.

Vitamin C Complex: A powerful antioxidant in stabilized form of Ascorbic Acid, enhanced with Glutathione and Colloidal Gold for that promotes a brighter skin.

Sodium Carrageenan: Concentrate of Scandinavian red algae that helps to protect skin from dehydration caused by pollution. It helps to stimulate epidermal hyaluronic acid and increase ceramide synthesis for intense hydration.

Laminaria Digitata Extract: A concentrated Seaweed Extract that supports collagen production and helps to smooth wrinkle appearance.

\$55.00

**Dr. C. Tuna Age Reversist
All Night Beauty Mask
1.7 fl. oz. 1000269**

Tested and approved by an internationally recognized independent and accredited laboratory.

*Probado a aprbadp por un laboratorio acreditado e independiente reconocido internacionalmente.

Age Reversist

Instant Perfecting Cream

IMMEDIATE ANTI-WRINKLE EFFECT

Formulated with plankton extract, this gel instantly fills in and tightens fine lines and wrinkles. It works to accelerate cell turnover and increase the production of collagen to create a more youthful appearance.

Formulada con extracto de plancton, esta crema en gel se funde en la piel y libera propiedades para rellenar y tensar las líneas finas y las arrugas en un instante. Ayuda a potenciar la recuperación celular y a aumentar la producción de colágeno para un look más joven.

Marine Plankton Extract: A unique active derived from fermented extract produced by marine plankton *Alteromonas*. It supports stimulation of collagen and elastin synthesis.

\$55.00

**Dr. C. Tuna Age Reversist
Instant Perfecting Cream**
30 Sachets 0.01 fl. oz. **1000275**

PROVIDES

+67%

**COLLAGEN INCREASE
WHEN USE DAYLY***

Proporciona un 67% de aumento de colágeno cuando se usa a diario.*



Lumi Radiance

Series

Brightens & Evens Skin Tone

Ilumina e iguala el tono de la piel

Concern

Uneven skin tone, hyper-pigmentation, dark spots and blemish scars. Those concerns are usually related to excessive sun exposure. UV rays weaken the immune system by suppressing the skin's metabolism, causing the skin's melanin production to increase to defend itself. As a result, excessive melanin production causes unwanted dark spots and hyper-pigmentation.

Tono de piel desigual, hiperpigmentación, manchas oscuras y cicatrices de imperfecciones. Problemas como la decoloración de la piel están relacionados con la exposición excesiva al sol. Los rayos UV debilitan el sistema inmunológico al suprimir el metabolismo de la piel y la piel aumenta la producción de melanina para defenderse. Como resultado, la producción excesiva de melanina provoca manchas oscuras o hiperpigmentación no deseadas.

Solution

This innovative series uses White Sand Lily to brighten and even out skin tone. Algae Extract works to reduce melanin synthesis by inhibiting the interaction between cells and decreasing melanin production leaving bright luminous skin. A broad spectrum sunscreen such as Dr. C. Tuna Sun series should be used to protect your skin from both UVA and UVB rays to prevent the recurrence of skin discoloration.

Este innovador régimen utiliza White Sand Lily para iluminar e igualar el tono de su piel. El extracto de algas para reducir la síntesis de melanina al inhibir la interacción entre las células y disminuir la producción de melanina dejándote con una piel luminosa y luminosa. Se debe usar un protector solar de amplio espectro como el de la serie Dr. C. Tuna Sun para proteger su piel de los rayos UVA y UVB y prevenir la reaparición de manchas.

Key Ingredients:

White Sand Lily, Algae Extract, Chlorella Vulgaris Extract | Lirio de arena blanca, extracto de algas, extracto de chlorella



Lumi Radiance

Series

NEW
FORMULA

Richer | Más abundante

Stronger | Más fuerte

More effective | Más efectivo



Lumi Radiance Series

Brightens & Evens Skin Tone

Ilumina e iguala el tono de la piel



MELANIN LEVELS
DECREASE
BY

-29%*

Diminución de los niveles
de melanina con un -29%*



MELANIN LEVELS
DECREASE
BY

-29%*

Diminución de los niveles
de melanina con un -29%*

Papaya Extracts: It contains an enzyme called papain that enhances the skin's natural purification process. Also has natural conditioning properties that helps to moisture the skin.

Bearberry Extract: It is a botanical skin brightener, the active agent is alpha arbutin. Helps to illuminate and brighten the complexion.

Dr. C. Tuna Lumi Radiance

Brightening Gel Cleanser

3.4 fl. oz.

1000300

\$20.00

Dr. C. Tuna Lumi Radiance

Brightening Toner

4.2 fl. oz.

1000295

\$20.00

*3rd Party Laboratory Apparatus Test Results

*3rd Party Laboratory Apparatus Test Results

All Skin Types | Todo Tipo de Piel
All Ages | Todas las Edades

MELANIN LEVELS
DECREASE
BY

-26%*

Diminución de los niveles de melanina con un -26%*



Papaya Extracts: Papaya can help with hyperpigmentation which can occur after breakouts, brightens the skin and helps to repair the skin's natural complexion.

Bearberry Extract: It is a botanical skin brightener, the active agent is alpha arbutin. Helps to illuminate and brighten the complexion.

Dr. C. Tuna Lumi Radiance

Brightening Serum

1 fl. oz.

1000298

\$40.00

*3rd Party Laboratory Apparatus Test Results

INCREASE IN THE
HYDRATION RATE
UP TO

+140%*

Aumento de la tasa de hidratación de la piel hasta en +140% en 1 hora.*



Amla Extract: It has high Vitamin C content that gives it a powerful antioxidant property, so it helps to protect the skin against pollutants.

Dr. C. Tuna Lumi Radiance

Brightening Cream **+SPF 22**

1.7 fl. oz.

1000297

\$35.00

*Considering the maximum data from the results.

MELANIN LEVELS
DECREASE
BY

-24%*

Diminución de los niveles de melanina con un -24%*



Chlorella Vulgaris Extract: Chlorella refers to a group of green algae that grows in freshwater. It has a brightening effect that may help in the reduction of pigmentation of the skin.

Dr. C. Tuna Lumi Radiance

Brightening Eye Balm

0.7 fl. oz.

1000299

\$20.00

*3rd Party Laboratory Apparatus Test Results

Acne Collection

Complexion Clearing

Aclaración de la piel

Concern

Helps to reduce acne by unclogging pores and managing sebum production to keep skin clear and regulated.

Ayuda a reducir el acné. Actúa para destapar los poros de suciedad y, al mismo tiempo, controla la producción de sebo, lo que ayuda a mantener la piel limpia y regulada.

Solution

This acne reducing collection combines powerful, yet gentle ingredients including Salicylic Acid, Glycolic Acid, and Willow Bark to help improve clarity, while reducing irritation and redness associated with acne and breakouts.

Esta colección para reducir el acné combina ingredientes potentes pero suaves como el ácido salicílico, el ácido glicólico y la corteza de sauce para ayudar a aclarar la piel y reducir la irritación y el enrojecimiento asociados con el acné y los brotes.

Key Ingredients:

Salicylic Acid, Glycolic Acid, Willow Bark, Witch Hazel and Marine Water | Ácido salicílico, ácido glicólico, corteza de sauce, hamamelis y agua marina



Acne Collection



Acne Collection

Complexion Clearing

Aclaración de la piel



DECREASES ACNE
AND INFLAMMATION
BY
-27%*

Diminución del acné y la
inflamación con un -27%*



DECREASES ACNE
AND INFLAMMATION
BY
-28%*

Diminución del acné y la
inflamación con un -28%*

2% Salicylic Acid: It's well-known for reducing acne by exfoliating the skin and keeping pores clear.

Glycolic Acid: Smoothes and improves skin texture.

Willow Bark Water: A purifying complex produced from Willow Bark that helps to reduce the inflammation caused by acne.

Organic Hamamelis Water: Helps to reduce redness, and to soothe the skin.

Dr. C. Tuna Acne

Clear Complexion Cleanser

3.4 fl. oz.

1000261

\$30.00

*3rd Party Laboratory Apparatus Test Results

0.5% Salicylic Acid: It's well-known for reducing acne by exfoliating the skin and keeping pores clear.

Glycolic Acid: Smoothes and improves skin texture.

Willow Bark Water: A purifying complex produced from Willow Bark that helps to reduce the inflammation caused by acne.

Organic Hamamelis Water: Helps to reduce redness, and to soothe the skin.

Dr. C. Tuna Acne

Pore Purifying Toner

4.2 fl. oz.

1000262

\$30.00

*3rd Party Laboratory Apparatus Test Results

Acne Prone Skin | Piel Propensa al Acné
All Ages | Todas las Edades

DECREASES ACNE
AND INFLAMMATION

BY
-31%*

Diminución del acné y la inflamación con un -31%*



1% Salicylic Acid: It's well-known for reducing acne by exfoliating the skin and keeping pores clear.

Glycolic Acid: Smoothes and improves skin texture.

Willow Bark Water: A purifying complex produced from Willow Bark that helps to reduce the inflammation caused by acne.

Organic Hamamelis Water: Helps to reduce redness, and to soothe the skin.

Dr. C. Tuna Acne
Blemish Control Serum

1.0 fl. oz.

1000263

\$50.00

*3rd Party Laboratory Apparatus Test Results

DECREASES ACNE
AND INFLAMMATION

BY
-26%*

Diminución del acné y la inflamación con un -26%*



Marine Water: A high mineral sea spring water to re-mineralise, detoxify and strengthen skin while minimizing pores.

Glycolic Acid: Smoothes and improves skin texture.

Willow Bark Water: A purifying complex produced from Willow Bark that helps to reduce the inflammation caused by acne.

Organic Hamamelis Water: Helps to reduce redness, and to soothe the skin.

Dr. C. Tuna Acne
Balancing Cream

1.7 fl. oz.

1000264

\$45.00

*3rd Party Laboratory Apparatus Test Results

Aqua Collection

Hydration & Moisture

Hidratación y Humectación

Concern

Get the glowing, hydrated complexion you've always wanted with our Aqua Collection. This Collection will provide hydration, helping to improve dry, rough, and unevenly textured skin. Protecting your skin from environmental factors that contribute to patchiness, this routine will give you the radiant, smooth complexion you desire.

Consigue la piel hidratada y radiante que siempre has deseado tener con nuestra Colección Aqua. Esta Colección ayuda a mejorar el aspecto áspero y la textura desigual. Así mismo, protege tu piel de la contaminación. Ayuda a mostrar una piel mas radiante y de aspecto saludable.

Solution

This energizing collection featuring Hyaluronic Acid works to retain moisture into the skin and provide continuous hydration. Aqua Collection combines water-based ingredients to deeply hydrate, plump and bring back elasticity to the skin. Ideal treatment for dry and dehydrated skin.

Esta colección energizante con ácido hialurónico ayuda a retener el agua de la piel y proporcionar una hidratación continua. Aqua Collection combina ingredientes a base de agua para hidratar profundamente, rellenar y devolver la elasticidad a la piel. Tratamiento ideal para pieles secas y deshidratadas.

Key Ingredients:

CG Sea Water, Sodium PCA, Hyaluronic Acid Complex
CG Agua de mar, Sodio PCA, Ácido Hialurónico



Aqua Collection



Aqua Collection

Hydration & Moisture

Hidratación y Humectación



Patch20®: A powerful moisturizing complex of hyaluronic acid enriched with hydrating and antioxidant compounds. Offers an immediate and long-lasting moisturization up to 48h in just one application.

Lactic Acid: Gently removes dead skin and helps to soothe and brighten skin surface.

Dr. C. Tuna Aqua

Restoring Gel Cleanser

3.4 fl. oz .

1000265

\$25.00



Patch20®: A powerful moisturizing complex of hyaluronic acid enriched with hydrating and antioxidant compounds. Offers an immediate and long-lasting moisturization up to 48h in just one application.

Sodium PCA: An abundant component of skin that hydrates by attracting water and trapping it in the skin while also helping to support skin's protective barrier.

Dr. C. Tuna Aqua

Boosting Hydra Drops

1.0 fl. oz.

1000266

\$45.00

Dry Skin | Piel Seca

All Ages | Todas las Edades

INTENSE HYDRATION
EFFECT UP TO

+124%

AFTER 1 HOUR!*

¡Efecto de hidratación intensa en la piel hasta en 124% después de 1 hora!*



PatchH2O®: A powerful moisturizing complex of hyaluronic acid enriched with hydrating and antioxidant compounds. Offers an immediate and long-lasting moisturization up to 48h in just one application.

Dr. C. Tuna Aqua Hydrating Cream

1.7 fl. oz.

1000267

\$45.00

*Considering the maximum data from the results.



PatchH2O®: A powerful moisturizing complex of hyaluronic acid enriched with hydrating and antioxidant compounds. Offers an immediate and long-lasting moisturization up to 48h in just one application.

CityGuard: Microalgae enriched with sea water that encourages firmness of under eye area.

Dr. C. Tuna Aqua Revitalizing Eye Cream

0.7 fl. oz.

1000268

\$25.00

Calendula

Series

Nourishment & Moisture for Dry Sensitive skin

Nutrición e hidratación para pieles sensibles

Concern

Itchiness, irritation, discomfort: These are all signs of a sensitive complexion. Sensitive skin tends to be hyper-reactive to different external factors that are well tolerated by normal skin. Dry sensitive skin need extra care, nourishment and gentle ingredients to restore healthy skin function.

Picazón, irritación, malestar: todos estos son signos de una piel sensible. La piel sensible tiende a ser hiperreactiva a diferentes factores externos que son normalmente bien tolerados por la piel normal. La piel seca y sensible necesita un cuidado extra, nutrición e ingredientes suaves para restaurar la función saludable de la piel.

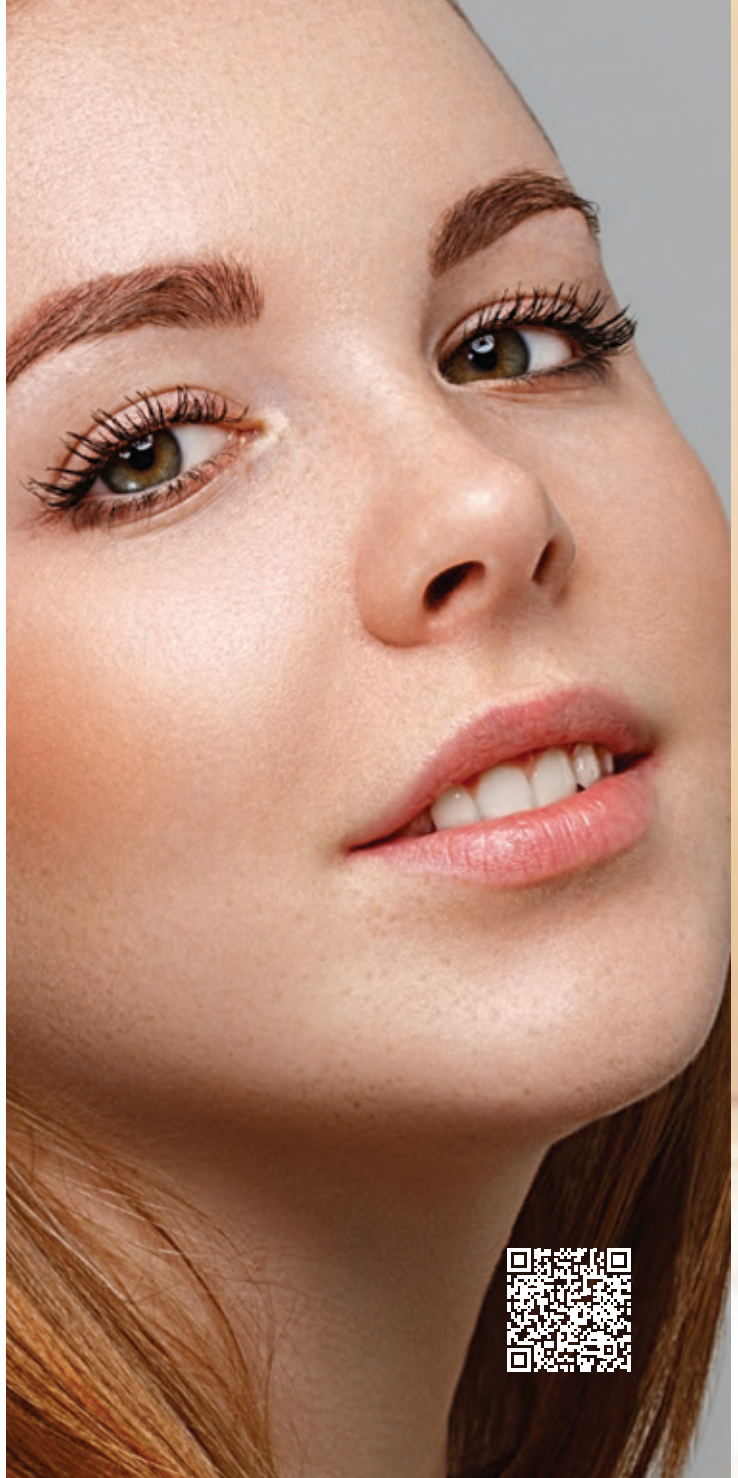
Solution

Infused with Calendula Oil and soothing plant extracts to calm sensations of skin discomfort, the Calendula Series helps to fortify skin's natural moisturizing barrier, leaving dry and sensitive skin intensely nourished and protected.

Formulada con Aceite de Caléndula y suaves extractos de plantas para calmar las pieles mas sensibles, la Serie Calendula ayuda a fortalecer la barrera de hidratacion natural de la piel, dejando la piel seca y sensible intensamente nutrida y protegida.

Key Ingredients:

Calendula Oil, Echinacea Extract, Marshmallow Extract and Burdock Extract | Aceite de caléndula, extracto de equinácea, Extracto de malvavisco y extracto de bardana



Calendula

Series

Richer | Más abundante

Stronger | Más fuerte

More effective | Más efectivo

NEW
FORMULA



Calendula

Series

Nourishment & Moisture for
Dry Sensitive skin

Nutrición e hidratación para
pieles sensibles



Grape Seed Extract: Moisturizes and softens the skin.
Glycerin: Glycerin is a natural component of healthy skin. Moisturizes and smoothes skin, makes skin appear dewy.

Dr. C. Tuna Calendula
Face Wash

3.4 fl. oz.	1000283
-------------	----------------

\$15.00



Sodium PCA: A part skin's natural moisturizing factor that hydrates by attracting water to and trapping it in the skin while also helping to support skin's protective barrier.
Organic Chamomile Water: Helps to calm, moisturize and soothe the skin.

Dr. C. Tuna Calendula
Face Toner

4.2 fl. oz.	1000284
-------------	----------------

\$15.00



Echinacea Extract: It helps to protect the skin and nourishes from the inside out.
Marshmallow Extract: May help to soothe redness and brings comfort while retaining moisture.
Burdock Extract: Soothes, moisturizes dry and sensitive skin.

Dr. C. Tuna Calendula
Face Cream

1.7 fl. oz.	1000285
-------------	----------------

\$20.00

Dry Sensitive Skin | Pieles Secas y Sensibles

All Ages | Todas las Edades



Avocado Oil: Moisturizes, nourishes and visibly softens skin.
Tea Seed Oil: Nurtures and helps skin retain moisture without leaving an oily appearance.

Dr. C. Tuna Calendula Cream Balsam

2.7 fl. oz.

1000286

\$25.00



Avocado Oil: Moisturizes, nourishes, and visibly softens skin.
Vitamin E: Known to provide radiance and protect the skin from environmental toxins.

Dr. C. Tuna Calendula Oil

1 fl. oz.

1000287

\$35.00

Calendula Clinical Test Results*

AFTER 4 WEEKS



Dr. C. Tuna Calendula
Face Wash

100%

FELT THEIR SKIN SOFT*
FELT THEIR SKIN MOISTURIZED*

100% Sienten su piel suave*
100% Sienten su piel hidratada*



Dr. C. Tuna Calendula
Face Toner

90%

AGREED IT HAS A SOOTHING & CALMING EFFECT*
AGREED THEIR SKIN LEFT COMFORTABLE*
AGREED IT REMOVED MAKE-UP RESIDUES AND IMPURITIES*

90% Notan ue tiene un efecto relajante y calmante*
90% Notan que la la piel queda cómoda*
90% Dicen que elimina residuos de maquillaje e impureza*

Vegan, Paraben free, Heavy metal free, SLS free, GMO free, Gluten free.
Dermatologically Tested for Sensitive Skin.

We are proud to follow the EU's strict standards. ECOCERT and COSMOS certified Calendula Oil.



Vegano, sin parabenos, sin metales pesados, sin SLS, sin OMG, sin gluten.
Testado dermatológicamente para pieles sensibles.
Estamos orgullosos de seguir los estrictos estándares de la UE. Certificación ECOCERT y COSMOS para nuestra Aceite de Calendula.



Dr. C. Tuna Calendula Face Cream

AFTER ONE USE
BOOSTS HYDRATION
BY

+71%*

PROVIDES 6+ HRS OF
CONTINUOUS
HYDRATION**

Después de 1 solo uso: aumenta
la hidratación de un **+71%****

**Proporciona más de 6 horas
de hidratación***

INCREASES
MOISTURIZATION
LEVEL BY

+39%

IN 4 HOURS**

Aumenta el nivel de hidratación
de un 39% en **4 horas****

*Considering the maximum data from the results.

**3rd Party Laboratory Apparatus Test Results

**p<0.01 Student T-Test. Tested and approved by an internationally
recognized independent and accredited laboratory."



Dr. C. Tuna Calendula Cream Balsam

DECREASES TEWL
(TRANSEPIDERMAL WATER LOSS)
BY

-26%*

TEWL (TRANSEPIDERMAL WATER LOSS)
IS THE AMOUNT OF WATER
EVAPORATING FROM THE SKIN

Disminuye TEWL (pérdida de agua transepidérmica)
de **- 26%** después de 4 semanas de uso*
TEWL (pérdida de agua transepidérmica) es la cantidad de
agua que se evapora de la piel

*3rd Party Laboratory Apparatus Test Results



Dr. C. Tuna Calendula Oil

DECREASES TEWL
(TRANSEPIDERMAL WATER LOSS)
BY

-16%

AFTER 4 WEEKS OF USE*

Disminuye TEWL (pérdida de agua transepidérmica)
de **- 16%** después de 4 semanas de uso*

*3rd Party Laboratory Apparatus Test Results

Tea Tree

Series

Excess Oil Control & Prevention

Control y Prevención del exceso de grasa

Concern

Our Tea Tree Series works to eliminate oily skin and promote a balanced complexion by reducing your skin's excess sebum production. Sebum is the naturally occurring substance your skin produces to hydrate and protect your skin. However, too much sebum can lead to oily skin, and clogged pores.

Exceso de producción de sebo. La piel grasosa es causada por la sobreproducción de sebo de las glándulas sebáceas. El sebo es la sustancia que hidrata y protege la piel y es importante para mantener la piel sana. Sin embargo, demasiado sebo puede provocar piel grasosa, y poros obstruidos.

Solution

The Dr. C. Tuna Tea Tree Series is perfect for purifying oily to combination skin while balancing and removing excess sebum. Our Tea Tree Series will leave your skin feeling clean, fresh, and clear!

La serie Dr. C. Tuna Tea Tree es perfecta para purificar la piel grasosa a mixta mientras equilibra y elimina el exceso de sebo. ¡Nuestra serie Tea Tree dejará tu piel limpia con una sensación de frescura!

Key Ingredients:

Tea Tree Oil, Thyme Extract, Marine Exopolysaccharide and Squalene | Aceite de árbol de té, extracto de tomillo, extracto de plancton marino y escualano



Tea Tree

Series

Richer | Más abundante

Stronger | Más fuerte

More effective | Más efectivo

NEW
FORMULA



Tea Tree Series

Excess Oil Control & Prevention

Control y Prevención del aspecto aceitoso

Tea Tree Cream Balsam

Dr. C. Tuna Tea Tree Cream Balsam nourishes and deeply moisturizes your skin with its active compounds. Tea Tree oil protects you from the negative impact of environment.

El Bálsamo Árbol de Té de Dr. C. Tuna nutre e hidrata profundamente la piel con sus principios activos. El Aceite del Árbol de Té protege contra los efectos negativos del medio ambiente.



Squalene: Natural squalene of vegetable origin. Works like skin's own oil to prevent moisture loss and restore suppleness.

Dr. C. Tuna Tea Tree
Cream Balsam

2.7 fl. oz.

1000291

\$25.00

Oily to Combination Skin | Pielas Grasosas a Mixtas
All Ages | Todas las Edades



Thyme Extract: Helps to bring balance and comfort to acne-prone skin. With its antioxidant properties, it soothes acne-related inflammation.

Dr. C. Tuna Tea Tree
Face Wash

3.4 fl. oz.	1000288
-------------	----------------

\$15.00



Thyme Extract: Helps to bring balance and comfort to acne-prone skin. With its antioxidant properties, it soothes acne-related inflammation.

Marine Exopolysaccharide: It helps to absorb the excess sebum on the surface of the skin and reduce shine and gives a mattified appearance.

Dr. C. Tuna Tea Tree
Face Toner

4.2 fl. oz.	1000289
-------------	----------------

\$15.00



Thyme Extract: Helps to bring balance and comfort to acne-prone skin. With its antioxidant properties, it soothes acne-related inflammation.

Squalene: Natural squalene of vegetable origin, works like your skin's natural oil to prevent moisture loss and restore suppleness.

Dr. C. Tuna Tea Tree
Face Cream

1.7 fl. oz.	1000290
-------------	----------------

\$20.00



Rosemary Extract: A potent antioxidant, rosemary leaf extract helps to protect the skin and calms skin conditions like acne.

Thyme Extract: Helps to bring balance; soothes and comforts acne-prone skin with its antioxidant properties.

Dr. C. Tuna Tea Tree
Serum

0.33 fl. oz.	1000292
--------------	----------------

\$20.00

Activated Charcoal

Series

Purifying & Pore Minimizing

Purificación Y Minimización de Poros

Concern

Clogged pores are the result of excess sebum and dead skin cells getting trapped in the skin instead of being shed into the environment. Pores are small openings in the skin that release sweat and oil. When pores are clogged or enlarged, it can result in blackheads, whiteheads, and acne.

Los poros obstruidos son el resultado del exceso de sebo y las células muertas de la piel que quedan atrapadas en lugar de caer al medio ambiente. Los poros son pequeñas aberturas en la piel que liberan sudor y grasa. Cuando los poros están obstruidos o agrandados, puede resultar en puntos negros, puntos blancos y acné.

Solution

The Dr. C. Tuna Activated Charcoal Series gently purifies pores without irritating the skin. Activated Charcoal acts like a magnet by attracting pore clogging residues like dirt, sebum, and dead skin cells. It works by pulling these impurities from the skin's surface, minimizing pores, and providing a clear and healthy-looking complexion.

La serie de carbón activado Dr. C. Tuna purifica suavemente los poros sin irritar la piel. El carbón activado actúa como un imán al atraer residuos que obstruyen los poros como impurezas sebo y células muertas de la piel. Actúa eliminando estas impurezas de la superficie de la piel, minimizando los poros y proporcionando una tez clara de aspecto saludable.

Key Ingredients:

Activated Charcoal Powder, Rosemary Extract and Marine Exopolysaccharide | Polvo de Carbón Activado, Extracto de Romero y Extracto de Eucalipto



All Skin Types | Todo Tipo De Piel
 All Ages | Todas las Edades

Richer | Más abundante
Stronger | Más fuerte
More effective | Más efectivo



DECREASE IN
 PORE SIZE
 BY
-26%*

Diminución del tamaño
 de los poros con un -26%*



DECREASE IN
 PORE SIZE
 BY
-30%*

Diminución del tamaño
 de los poros con un -30%*

Rosemary Extract: A potent antioxidant, rosemary leaf extract protects the skin and calms skin conditions.
Eucalyptus Extract: It is well-known for its purifying and cleansing properties. Helps to protect the skin from environmental effects and retains the moisture content of the skin quite efficiently.

**Dr. C. Tuna Activated
 Charcoal**

Face Toner

4.2 fl. oz.	1000293
-------------	----------------

\$15.00

Rosemary Extract: A potent antioxidant, rosemary leaf extract protects the skin and calms skin conditions.
Eucalyptus Extract: It is well-known for its purifying and cleansing properties. Helps to protect the skin from environmental effects and retains the moisture content of the skin quite efficiently.

**Dr. C. Tuna Activated
 Charcoal**

Black Mask

2.7 fl. oz.	1000294
-------------	----------------

\$20.00

*3rd Party Laboratory Apparatus Test Results

DR. C. TUNA SKINCARE GUIDE

GUÍA DE CUIDADO DE LA PIEL

Dr. C. Tuna Age Reversist Series



FINE LINES & WRINKLE PREVENTION

Prevención de líneas finas y arrugas

Skin Type:
Tipo de Piel

All Skin Types - Todo Tipo de Piel

Age Range:
Rango de Edad

Age: 25+
Edad: 25+

Benefits:
Beneficios

Reduces and helps prevent wrinkles and fine lines / Reduce y ayuda a prevenir arrugas y líneas de expresión

Results:

Helps Minimize fine lines & wrinkles by increasing Collagen Synthesis by 67% / Ayuda a minimizar las líneas finas y las arrugas aumentando la síntesis de colágeno un 67%.

Key Ingredients | Ingredientes Principales

- Microalgae Technology | Tecnología de microalgas
- 3R Skin Technology | Tecnología 3R Skin
- Plankton Extract | Extracto de plancton
- Marine Bioactive Technology | Tecnología marina bioactiva

Dr. C. Tuna Resurface Series



FINE LINES & WRINKLES

Líneas finas y arrugas

Skin Type:
Tipo de Piel

All Skin Types - Todo Tipo de Piel

Age Range:
Rango de Edad

Age: 35+
Edad: 35+

Benefits:
Beneficios

Anti-aging skincare to prevent the loss of elasticity and firmness / Tecnología de cuidado de la piel anti-vejes que previene la pérdida de elasticidad y firmeza.

Results:

Treats the signs of aging before they start with powerful ingredients like Retinol, Vitamin C and Chicory Leaf Extract / Trata los signos del envejecimiento antes de que comiencen con ingredientes poderosos como Retinol, Vitamina C y Extracto de hoja de Achicoria

Key Ingredients | Ingredientes Principales

- Retinol
- Chicory Leaf Extract - Extracto de hoja de achicoria
- Chlorella Vulgaris Extract - Extracto de Chlorella Vulgaris
- Niacinamide - Niacinamida
- Fruit Extracts - Extracto de frutas

DR. C. TUNA COLLECTION

INNOVATION FOR YOUR SKIN | INNOVACIÓN PARA TU PIEL

Dr. C. Tuna Lumi Radiance Series



UNEVEN SKIN TONE & HYPERPIGMENTATION

Tono de piel desigual e hiperpigmentación

Skin Type:

Tipo de Piel

All Skin Types - Todo Tipo de Piel

Age Range:

Rango de Edad

All Ages
Todas las Edades

Benefits:

Beneficios

Brightening & Radiance
Brillo y luminosidad

Results:

Helps brighten and evens skin tone, reduces hyperpigmentation & dark spots / Ayuda a iluminar y unificar el tono de la piel, reduce la hiperpigmentación y las manchas oscuras.

Key Ingredients | Ingredientes Principales

- White Sand Lily | Lirio de arena blanca
- Algae Extract | Extracto de algas
- Papaya Extract | Extracto de papaya
- Bearberry Extract | Extracto de gayuba

Dr. C. Tuna Acne Series



ACNE & BLEMISHES

Acné e imperfecciones

Skin Type:

Tipo de Piel

Acne Prone Skin - Piel Propensa al Acné

Age Range:

Rango de Edad

All Ages
Todas las Edades

Benefits:

Beneficios

Acne Treatment & Prevention
Tratamiento y prevención del acné

Results:

Helps rid the skin of acne as well as occasional breakouts / Ayuda a eliminar el acné y los brotes ocasionales de la piel.

Key Ingredients | Ingredientes Principales

- Willow Bark | Corteza de sauce
- Witch Hazel | Hamamelis
- Marine Water | Agua Marina
- Salicylic & Glycolic Acid | Ácido salicílico y glicólico

DR. C. TUNA SKINCARE GUIDE

GUÍA DE CUIDADO DE LA PIEL

Dr. C. Tuna Aqua Series



HYDRATION & MOISTURE Hidratación y Humectación

Skin Type: Tipo de Piel	Dry & Dehydrated Skin - Piel Seca y Deshidratada
Age Range: Rango de Edad	All Ages Todas las Edades
Benefits: Beneficios	Hydration & Protection / Hidratación y protección
Results: Helps to restore hydration and nutrients, softens and repairs dry skin / Ayuda a restaurar la hidratación y los nutrientes, suaviza y repara la piel seca.	
Key Ingredients: <ul style="list-style-type: none"> · Hyaluronic Acid Complex Complejo de Ácido Hialurónico · CG Sea Water Agua de mar CG · Sodium PCA PCA de sodio 	

Dr. C. Tuna Calendula Series



NOURISHMENT & MOISTURE FOR DRY SENSITIVE SKIN

Nutrición y humectación para pieles secas y sensibles

Skin Type: Tipo de Piel	Dry Sensitive Skin - Piel Secas y Sensibles
Age Range: Rango de Edad	All Ages - Todas las Edades
Benefits: Beneficios	Nutrition & Renewal / Nutrición y Renovación
Results: Helps to nourish, keeps skin soft, smooth and healthy / Ayuda a nutrir, mantiene la piel suave, lisa y saludable	
Key Ingredients Ingredientes Principales <ul style="list-style-type: none"> · Calendula Oil Aceite de caléndula · Echinacea Extract Extracto de equinácea · Marshmallow Extract Extracto de malvavisco · Burdock Extract Extracto de bardana 	

THE NEW DR. C. TUNA COLLECTIONS

INNOVATION FOR YOUR SKIN

Dr. C. Tuna Tea Tree Series



EXCESS OIL CONTROL & PREVENTION

Control y prevención del exceso de aceite

Skin Type: Tipo de Piel	Oily to Combination Skin Piel grasosa mixta
Age Range: Rango de Edad	All Ages - Todas las Edades
Benefits: Beneficios	Oil Control / Control de aceite
Results: Purifies skin while balancing and removing excess sebum / Purifica la piel mientras equilibra y elimina el exceso de sebo.	
Key Ingredients Ingredientes Principales	
<ul style="list-style-type: none"> • Tea Tree Oil Aceite de árbol de té • Thyme Extract Extracto de tomillo • Squalene Escualano • Marine Exopolysaccharide Extracto de plancton marino 	

Dr. C. Tuna Activated Charcoal Series



PURIFYING & PORE MINIMIZING

Purificación y minimización de poros

Skin Type: Tipo de Piel	All Skin Types - Todo Tipo de Piel
Age Range: Rango de Edad	All Ages - Todas las Edades
Benefits: Beneficios	Clear Complexion Aclara la tez
Results: Purifies skin and deeply cleanses pores / Purifica la piel y los poros para una piel profundamente limpia.	
Key Ingredients Ingredientes Principales	
<ul style="list-style-type: none"> • Activated Charcoal Powder Carbón activado • Rosemary Extract Extracto de romero • Eucalyptus Extract Extracto de eucalipto 	

Reviving Garlic, Capixyl™ & Trichogen™

Haircare Series

Stronger Fuller-Looking Hair

Cabello más Fuerte y Completo

Dr. C. Tuna Reviving Hair Oil

1

A concentrated treatment oil for the hair and scalp enriched with Sunflower Oil, Vitamin E, and Sweet Almond Oil that makes your hair feel soft and healthy instantly.

Una fórmula concentrada para hacer que tu cabello se sienta instantáneamente suave y saludable, enriquecida con aceite de girasol, vitamina E y aceite de almendras dulces.

Dr. C. Tuna Reviving Shampoo

2

A gentle shampoo that helps strengthen and thicken all types of thinning hair and keeps it looking shiny and healthy with garlic, Capixyl™ and new ingredient Trichogen™.

Un champú suave que ayuda a fortalecer y espesar todo tipo de cabello debilitado y lo mantiene brillante y saludable con ajo, Capixyl y el nuevo ingrediente Trichogen™.

Dr. C. Tuna Reviving Hair Mask

3

A light-weight hair mask perfect for all types of thin hair enriched with garlic, Capixyl™ and Trichogen™, to provide strength and shine.

Una mascarilla capilar ligera perfecta para todo tipo de cabellos finos enriquecida con ajo, Capixyl™ y Trichogen™ para proveer fuerza y brillo.



All Hair Types

Todo Tipo de Cabello



HAIR GROWTH
+21.34%
IN 6 WEEKS!*

¡Crecimiento del Cabello
de +21.34% en 6 semanas!*



Macadamia Oil: Rich in oleic acid, Macadamia oil deeply hydrates from scalp to strands and locks in moisture. It helps to calm frizzy hair and adds shine to damaged hair.

Rosemary Oil: Supports hair growth and soothes scalp by improving circulation. This herbal oil helps hair to look stronger and shinier.

Adansonia Digitata (Baobab) Seed Oil: Helps to moisturize and soften fragile hair with its high Omega-3 and Vitamin C content. This lightweight oil nourishes your hair without weighing down, supporting a healthy shiny appearance.

Color Protecting Complex: A combination of botanical oils and extracts that help to protect hair against UV damage and to prevent color fading caused by UV. This rich complex enhances gloss, shine and strength of hair.

Trichogen™: Enriched with Biotin and botanical extracts, this powerful active helps to improve the strength of the hair and to stimulate hair growth. Helps to repair and to increase hair quality.

Macadamia Oil: Rich in oleic acid, Macadamia oil deeply hydrates from scalp to strands. It helps to calm frizzy hair and adds shine to damaged hair.

Tamanu Oil: Loaded with nourishing Omega-9, it softens hair to have a healthy look.

Camellia Oil: Softens hair to create a healthier, more luxurious look. It helps to keep hair moisturized and full of shine.

Trichogen™: Enriched with Biotin and botanical extracts, this powerful active helps to improve hair strength and to stimulate hair growth. Helps to repair and to increase hair quality.

Color Protecting Complex: A combination of botanical oils and extracts that help to protect hair against UV damage and to prevent color fading caused by UV. This rich complex enhances gloss, shine and strength of hair.

1 Dr. C. Tuna Reviving Hair Oil

1 fl. oz.	1000311
\$30.00	

2 Dr. C. Tuna Reviving Shampoo

7.6 fl. oz.	1000309
\$20.00	

3 Dr. C. Tuna Reviving Hair Mask

6.7 fl. oz.	1000310
\$25.00	

Hydrating

Haircare Series

Repair Dry Hair

Reparación para el Cabello seco

Dr. C. Tuna Hydrating Shampoo

1

A daily hydrating shampoo to gently clean and add moisture, while soothing and conditioning the scalp. Enriched with PatchH2O® & Macadamia Oil, this shampoo also protects hair color and texture from the harmful damage of UV rays.

Un champú hidratante suave de uso diario que limpia e hidrata el cabello y el cuero cabelludo. Enriquecido con PatchH2O® y aceite de macadamia, este champú protege el color y la textura del cabello de los daños de los rayos UV.

Dr. C. Tuna Hydrating Hair Conditioner

2

A high-performance hydrating conditioner infused with PatchH2O® & Macadamia Oil to quench and detangle dry hair. For daily use.

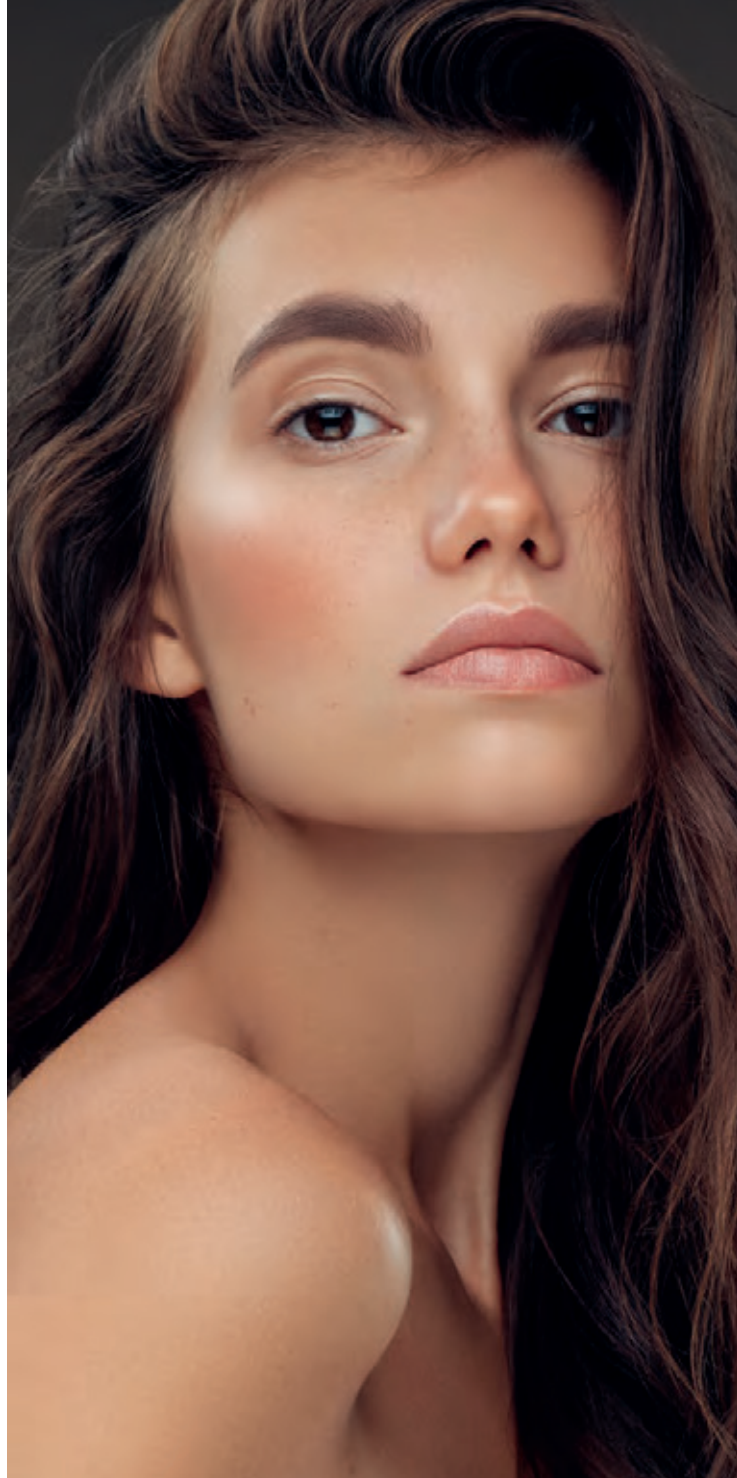
Un acondicionador hidratante para uso diario con PatchH2O® y aceite de macadamia para calmar y desenredar el cabello seco.

Dr. C. Tuna Hydrating Hair Mask

3

An exceptional hair mask enriched with PatchH2O® & Macadamia Oil to enhance perfect shine, deep hydration and protection.

Una mascarilla para el cabello excepcional enriquecida con PatchH2O® y aceite de macadamia para conseguir un brillo perfecto, una hidratación profunda y la protección del cabello.



Dr. C. Tuna Hydrating
Haircare Series



IMMEDIATE EFFECT
AFTER 4 HOURS

+17%

SCLAP HYDRATION
INCREASES.

¡Aumento de la hidratación del
cuero cabelludo: +17% después
de 4 horas.

LONG-TERM EFFECT
AFTER 3 WEEKS

+52%

SCLAP HYDRATION
INCREASES.

¡Aumento de la hidratación del
cuero cabelludo: +52% después
de 21 días!



Hyaluronic Acid Complex: This unique active mixture helps to relief and moisten the scalp. It also supports creating a bio-barrier on the surface of damaged hair and it smoothens damaged hair while giving rehydration effect to hair.

Rambutan Seeds: It is an active that revitalizes the hair from root to tip by bringing hair freshness, vitality and moisturization.

Color Protecting Complex: Through this complex, hair color and structure remain protected from UV damage.

Oil Blend A blend of Oils (Olive Oil, Camellia and Tamanu): This powerful blend helps to enhance gloss and shine of the hair also provides protective antioxidant effect to prevent color fading and cuticle damage.

Hyaluronic Acid Complex: This unique active mixture helps to relief and moisten the scalp. It also supports creating a bio-barrier on the surface of damaged hair and it smoothens damaged hair while giving rehydration effect to hair.

Rambutan Seeds: It is an active that revitalizes the hair from root to tip by bringing hair freshness, vitality and moisturization.

Color Protecting Complex: Through this complex, hair color and structure remain protected from UV damage.

Oil Blend A blend of Oils (Olive Oil, Camellia and Tamanu): This powerful blend helps to enhance gloss and shine of the hair also provides protective antioxidant effect to prevent color fading and cuticle damage.

Hyaluronic Acid Complex: This unique active mixture helps to relief and moisten the scalp. It also supports creating a bio-barrier on the surface of damaged hair and it smoothens damaged hair while giving rehydration effect to hair.

Rambutan Seeds: It is an active that revitalizes the hair from root to tip by bringing hair freshness, vitality and moisturization.

Color Protecting Complex: Through this complex, hair color and structure remain protected from UV damage.

Oil Blend A blend of Oils (Olive Oil, Camellia and Tamanu): This powerful blend helps to enhance gloss and shine of the hair also provides protective antioxidant effect to prevent color fading and cuticle damage.

① **Dr. C. Tuna Hydrating**
Shampoo

7.6 fl. oz.

1000312

\$30.00

② **Dr. C. Tuna Hydrating**
Hair Conditioning

6.7 fl. oz.

1000313

\$20.00

③ **Dr. C. Tuna Hydrating**
Hair Mask

3.7 fl. oz.

1000314

\$25.00

Volumizing

Haircare Series

Maximum fullness for thin hair

Volumen máximo para cabello fino

Dr. C. Tuna Volumizing Shampoo

1

A daily use shampoo with Linden Extract and Lemon Oil to gently yet effectively cleanse the hair while providing maximum fullness. It helps to restore suppleness and volume to fine, thin hair.

Un champú de uso diario con Extracto de tilo y Aceite de Limón para limpiar el cabello de manera suave pero eficaz mientras proporciona el máximo volumen. Ayuda a restaurar la flexibilidad y el volumen del cabello fino y debilitado.

Dr. C. Tuna Volumizing Hair Conditioner

2

A lightweight conditioner infused with Linden Extract and Lemon Oil to provide dimension, movement and volume to fine hair while reducing static electricity and offering UV protection for daily use.

Un acondicionador ligero con Extracto de tilo y aceite de limón que proporciona dimensión, movimiento y volumen al cabello fino mientras reduce la electricidad estática y ofrece protección UV para un uso diario.



Dr. C. Tuna Volumizing
Haircare Series



IN A CONSUMER PERCEPTION STUDY,
+84,2%

AGREE THEIR HAIR HAD MORE VOLUME/ SHINE AND FLEXIBILITY

En un estudio de percepción del consumidor, el 84,2% está de acuerdo en que su cabello tiene más volumen / brillo y flexibilidad



IN A CONSUMER PERCEPTION STUDY,
+89,5%

AGREE THEIR HAIR HAD MORE VOLUME

En un estudio de percepción del consumidor, 89,5% está de acuerdo en que su cabello tiene más volumen.

Linden Extract: This plant extract helps to create protective film on hair and supports to restructuring and smooths hair fibers.

Microalgae Extract: This natural extract from microalgae helps to improve volume, and makes hair stronger and more vital. It restores suppleness, sheen and volume.

Color Protecting Complex: Through this complex, hair color and structure remain protected from UV damage.

Pea Protein: 100% plant origin ingredient that improves the elasticity of hair by performing a filler and volume effect.

Coconut & Mango & Tomato and Lemon Oil Blend: This essential nutrients blend for hair helps to create shinier and voluminous hair.

Linden Extract: This plant extract helps to create protective film on hair and supports to restructuring and smooths hair fibers.

Microalgae Extract: This natural extract from microalgae helps to improve volume, and makes hair stronger and more vital. It restores suppleness, sheen and volume.

Color Protecting Complex: Through this complex, hair color and structure remain protected from UV damage.

Coconut & Mango & Tomato and Lemon Oil Blend: This essential nutrients blend for hair helps to create shinier and voluminous hair.

① **Dr. C. Tuna Volumizing**
Shampoo

7.6 fl. oz.	1000315
-------------	----------------

\$30.00

② **Dr. C. Tuna Volumizing**
Hair Conditioner

6.7 fl. oz.	1000316
-------------	----------------

\$20.00

Massage

Series

De-Stress and Relax

Elimine el Estrés y Relájese

Dr. C. Tuna Double Effect Paprika & Chili Balsam

1

Ideal for an invigorating massage. A strong combination of Red Chili, Ginger, Nettle, Menthol and numerous essential oils to soothe your body after a long day.

Ideal para un masaje vigorizante. Una combinación fuerte de chile rojo, jengibre, ortiga, mentol y además numerosos aceites esenciales para calmar su cuerpo después de un largo día.



1

Dr. C. Tuna Massage Gel X2 Paprika & Chili Balsam

5.1 fl. oz.

1000305

\$11.00

Herbal Infused Massage Gels

Geles para Masajes con Infusión de Hierbas

Dr. C. Tuna Double Effect Pferde Horse Chestnut Balsam

2

Ideal for a relaxing massage. Enriched with Horse Chestnut Extract, St. John's Wort, Mint, Menthol, and promote muscle relaxation. Arnica and Rosemary extracts to help to moisturize the skin.

Ideal para un masaje relajante. Enriquecido con extracto de castaño de indias, hierba de San Juan, menta, mentol y aceites esenciales promueven la relajación muscular. Los extractos de árnica y romero que ayudan a hidratar y nutrir la piel.



2

Dr. C. Tuna Massage Gel X2 Pferde Horse Chestnut Balsam

5.1 fl. oz.

1000304

\$11.00

Lavender Dreams Spray

Get a Good Night's Sleep With Lavender

Duerma bien por la noche con Lavanda

Spray this relaxing mist on your pillow or sheets just before you go to bed and enjoy the relaxing benefits of lavender while you sleep.

Roc e esta niebla relajante en su almohada o s abanas justo antes de irse a la cama y disfrute de los beneficios relajantes de la lavanda mientras duerme.

Dr. C. Tuna Lavender

Dreams Mist

1.7 fl. oz.

1000319

\$17.00



Intimate Care

Series

Special Care for Every Woman

Cuidado especial para cada mujer



SLES FREE

ALCOHOL FREE

PARABEN FREE

Dr. C. Tuna Intimate Care Wipes

20 Pcs.

1000308

\$7.00



PARABEN FREE

SULFATE FREE

SLES FREE

SLS FREE

DYE FREE

Dr. C. Tuna Intimate Care Wash Gel

7.6 fl. oz.

1000307

\$16.00



Leaves skin feeling silky and smooth with Papaya Extract and Vitamin E.

Deja la piel sedosa y tersa con extracto de Papaya y Vitamina E.

Dr. C. Tuna Hair Removal Cream

3.4 fl. oz.

1000306

\$15.00

Foot

Series

Treat Your Feet

Cuida tus Pies



Dr. C. Tuna Foot Odour Control Deodorizing Foot Spray

3.9 fl. oz.

1000320

\$12.00



Dr. C. Tuna Foot Ultra-Rich Intensive Foot Cream

1.7 fl. oz.

1000321

\$13.00



Dr. C. Tuna Foot Hand & Foot Peeling Sea Salt

8.5 fl. oz.

1000322

\$18.00

Sun

Series

Protect Your Skin

Proteja su piel



Dr. C. Tuna Sun Care

SPF 6 Bronzing Oil

3.9 fl. oz.

1000303

\$15.00



Dr. C. Tuna Sun Care

SPF 50 Face and Body Sun Lotion

2.5 fl. oz.

1000302

\$18.00



Dr. C. Tuna Sun Care

Aloe Soothing Gel After Sun

3.4 fl. oz.

1000301

\$20.00

A purple pouch of Nutriplus instant coffee blend stands next to a white cup filled with coffee granules on a saucer. The pouch is labeled 'Nutriplus' and 'INSTANT COFFEE WITH CHICORY AND COLLAGEN BLEND'. The cup is on a white saucer, and a silver spoon is visible on the right. Green leaves are in the top left corner.

Nutriplus

INSTANT COFFEE WITH CHICORY AND
COLLAGEN
BLEND

Net Wt. 100 g (3.53 oz)

Nutriplus Coffee

With Chicory & Collagen Blend

The outstanding benefits of chicory now with the proven effects of collagen

51% chicory

34% coffee

15% type I and type III hydrolyzed bovine collagen

The perfect cup of coffee does exist!
Health and Beauty from the inside out
Nutriplus coffee with chicory and collagen blend only from FARMASI!

Café nutriplus con achicoria y una mezcla de colágeno

Los beneficios destacados de la achicoria ahora con los efectos probados del colágeno



¡La taza de café perfecta existe!
Salud y belleza de adentro hacia afuera
Café Nutriplus con achicoria y mezcla de colágeno sólo en FARMASI

Key Ingredients:

Chicory ,Coffee, Collagen

Achicoria, Café, Colágeno

\$ 30.00
Nutriplus Coffee with
Chicory & Collagen Blend
3.53 oz.
9700005

Nutriplus Coffee

Chicory & Grains

What is Chicory Coffee?

Chicory coffee is made using the roots of the chicory plant, which are roasted, ground and brewed. Chicory coffee tastes similar to traditional coffee but has natural flavors that resonate with a slightly woody and nutty taste.

¿Qué es el café de achicoria?

El café de achicoria se elabora a partir de las raíces de la planta de achicoria, que se tuestan, muelen y elaboran. El café de achicoria tiene un sabor similar al café tradicional, pero tiene sabores naturales que resuenan con un sabor ligeramente amaderado y a nuez.

What are its Benefits:

Chicory is naturally caffeine-free and contains zinc, magnesium, manganese, calcium, iron-folic acid, and potassium. Chicory is a good source of inulin, a prebiotic fiber that can help with weight loss and gut health, making Nutri Coffee a great healthy alternative with less caffeine than traditional coffee.

Cuáles son sus beneficios:

La achicoria es naturalmente libre de cafeína y contiene zinc, magnesio, manganeso, calcio, hierro-ácido fólico y potasio. La achicoria es una buena fuente de inulina, una fibra prebiótica que puede ayudar con la pérdida de peso y la salud intestinal, lo que hace que el café Nutri sea una excelente alternativa saludable, ya que tiene menos cafeína que el café tradicional.

Key Ingredients:

Chicory Root
Raíz de achicoria

What is Grain Blend Coffee?

Nutriplus Grain Blend Coffee is made using mixed blends of nutrient-rich barley and rye grains which are roasted, ground and brewed. Nutriplus Grain Blend tastes similar to traditional coffee but has natural flavors that resonate with a slightly earthy nutty taste.

¿Qué es el café de grano?

Nutriplus Grain Blend Coffee se elabora utilizando mezclas de cereales de centeno y cebada ricos en nutrientes que se tuestan, muelen y elaboran. El café Nutriplus Grain Blend tiene un sabor similar al café tradicional, pero tiene sabores naturales que resuenan con un sabor a nuez ligeramente terroso.

What are its Benefits:

Grain Blend Coffee contains minerals and carbohydrates nutrients, as well as vitamins E and B1. It is a good source of fiber, reducing the glucose released in the body and keeps the sugar level in the blood under control, while also providing a boost of natural energy making it a great healthy alternative to traditional coffee.

Cuáles son sus beneficios:

Nutri Plus Grain Blend café contiene nutrientes minerales y carbohidratos, así como vitaminas E y B1. Es una buena fuente de fibra, reduce la glucosa liberada en el cuerpo y mantiene bajo control el nivel de azúcar en la sangre, al mismo tiempo que proporciona un impulso de energía natural, lo que lo convierte en una excelente alternativa saludable al café tradicional.

Key Ingredients:

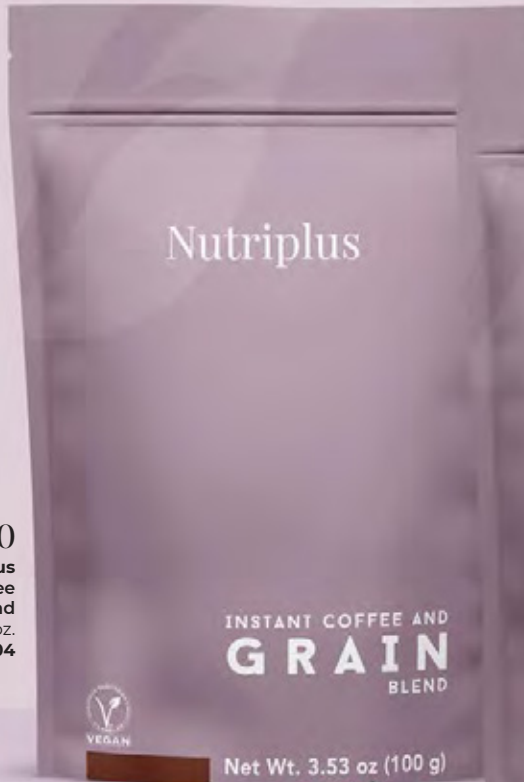
Nutrient Rich Barley and Rye
Cebada y centeno ricos en nutrientes

Coffee with a Purpose

Café con Propósito



\$22.00
Nutriplus
Instant Coffee
& Grain Blend
3.53 oz.
9700004



\$22.00
Nutriplus
Instant Coffee
& Chicory Blend
3.53 oz.
9700003

Available in February | Disponible en Febrero

Beauty Booster

Collagen

Support your collagen needs of your skin with this collagen powder

Promueve las necesidades de tu piel con este colágeno en polvo

Benefits / Beneficios

Supports Skin Firmness & Elasticity
Supports Collagen Production****

Promueve la firmeza y elasticidad de la piel**

Promueve la producción de Colágeno en la piel**

INGREDIENTS	1 Scoop (10,13g)	%DV*
Hydrolyzed Collagen	10000 mg	-
Vitamin C	80 mg	88.89%
Hyaluronic Acid	50 mg	-
* DV: Daily Value		

Non-GMO, Soy Free, Dairy Free, Gluten Free, No Sugar, Heavy Metal Free, Not For Weight Control, No Sweetener, Unflavored, No Artificial Color, No Artificial Flavor | Sin OMG, Sin Soja, Sin lacteos, Sin Gluten, Sin Azúcar, No Preservativos, No para control de peso, Sin Endulzante, Sin Sabor, Sin Colores Artificiales, Sin Sabores Artificiales



\$ 80.00
Nutriplus
Beauty Booster
Collagen
8.8 oz.
10000412

**These Statements have not been evaluated by the Food and Drug Administration. This product is not intended to diagnose, treat, cure or prevent any disease.

Vitamin C

Effervescent Tablets

With Vitamin D and Zinc

Con Vitamina D y Zinc

Fullfill your daily Vitamin C, and D needs with only one effervescent tablet

Satisface tus necesarias diarias de vitamina C, D y zinc con una sola tableta efervescente

Benefits / Beneficios

Supports the immune system**

Supports normal collagen production**

Refuerza la inmunidad**

Promueve la producción de colágeno**

INGREDIENTS	1 Effervescent Tablet	%DV*
Vitamin C	1000 mg	1111%
Zinc	10 mg	91%
Vitamin D	25 µg	125%
* DV: Daily Value		

Non-GMO, Soy Free, Dairy Free, Gluten Free, Contains Sweetener, Heavy Metal Free, Cholesterol Free, No Artificial Flavor, No Preservative | Sin OMG, Sin Soja, Sin Lacteos, Sin Gluten, Contiene Endulzante, Sin Preservativos, Sin Colesterol, Sin Sabores Artificiales, Sin Preservativos



\$ 25.00

Nutriplus
Vitamin C
Effervescent
2.17 oz.
1000405

**These Statements have not been evaluated by the Food and Drug Administration. This product is not intended to diagnose, treat, cure or prevent any disease.

Omega - 3

Soft Gel

**Enteric coated (Increased bioavailability)
It dissolves in the intestine, not the stomach
Contains 375 mg EPA and 250 mg DHA only in
one softgel capsule**

**Recommended to consume one soft gel per day
as a dietary supplement by adults**

Recubrimiento entérico (mayor biodisponibilidad)
Se disuelve en el intestino, no en el estómago.
Contiene 375 mg de EPA y 250 mg de DHA solo en
una cápsula de gelatina blanda
Se recomienda consumir un gel suave al día como
suplemento dietético para adultos.

Benefits / Beneficios

Supports heart health
Support normal brain and vision
function****

Promueve la salud inmunológica **
Promueve la buena salud de los huesos,
los dientes y los músculos **

**This Statement has not been evaluated by the Food and Drug Administration. This product is not intended to diagnose, treat, cure or prevent any disease.

**Non-GMO, GMP, Soy Free, Dairy Free,
Gluten Free, Heavy Metal Free, Cholesterol
Free, No Artificial Color, No Artificial Flavor,
No Sugar, No Sweetener**

Sin OMG, Sin Soja, Sin lacteos, Sin Gluten, Sin
Metal, Sin Colesterol, Sin Colores Artificiales,
Sin Sabores Artificiales, No contiene Azúcar,
No Contiene Endulzantes

INGREDIENTS	1 Soft Gel	%DV *
Fish Oil	1042 mg	-
Omega 3	625 mg	-
EPA	375 mg	-
DHA	250 mg	-
*DV: Daily Value		



\$ 45.00
**Nutriplus
Omega-3
1.48 oz.
10000411**

Multivitamin

And Mineral For Kids

Chewable

Masticable

Benefits / Beneficios

Fullfills the daily need of 10 vitamins and minerals
of your child

Suitable for children between the ages of 4-10

Supports Healthy Growth & Development**

Satisface las 10 vitaminas y minerales diarios necesarias para
sus niños

Recomendado para niños de 4-10 años**

INGREDIENTS	1 Chewable Tablet	2 Chewable tablets	%DV*
Vitamin C	40 mg	80 mg	89%
Vitamin A	206,62 mcg	413,25 mcg	46%
Folate	170 mcg	340 mcg	85%
Vitamin B5	3 mg	6 mg	120%
Vitamin E	0,90 mg	1,80 mg	12%
Vitamin B6	0,70 mg	1,40 mg	82%
Vitamin B1	0,55 mg	1,10 mg	91,67%
Vitamin A	206,625 mg	413,25 mg	46%
Zinc	3,75 mg	7,5 mg	68%
Pantothenic Acid	3 mg	6 mg	120%
Biotin	25 mcg	50 mcg	167%
Vitamin D	5 mcg	10 mcg	50%
Thiamin	0,55 mg	1,1 mg	92%
Niacin	8 mg	16 mg	100%
Selenium	27,5 mcg	55 mcg	100%

*DV: Daily Value

Non-GMO, GMP, Soy Free, Dairy Free,
Gluten Free, Heavy Metal Free, Cholesterol
Free, Contains Sweetener, No Artificial
Color, No Artificial Flavor, No Preservatives
Sin OMG, Sin Soja, Sin Gluten, Sin Metal,
Sin Colesterol, Contiene Endulzante, Sin
Colores Artificiales, Sin Sabores Artificiales,
Sin Preservativos



\$ 35.00

**Nutriplus
Multivitamin
For Kids
2.20 oz.
10000409**

**This Statement has not been evaluated by the Food and Drug Administration. This product is not intended to diagnose, treat, cure or prevent any disease.



Eco-Friendly Cleaning Limpieza Ecológica

Mr. Wipes is a collection of high-performance household products. With no harmful ingredients like parabens, sulfates, phosphates, formaldehyde, phthalate, dyes, SLS, and chlorine

Mr. Wipes es una colección de alto rendimiento de productos domésticos. Sin parabenos, sulfatos, fosfatos, formaldehído, ftalato, colorantes, SLS, cloro o gluten.





Home Series

Serie de Cuidado del Hogar



A concentrated dense foam for perfectly clean dishes every day. Effectively cleans even the most stubborn grime from dishes and kitchenware.

Una espuma densa y concentrada para platos perfectamente limpios en cada lavado. Limpia eficazmente incluso la suciedad más obstinada de platos y utensilios de cocina.



Mr. Wipes Home

Magic Sponge

1 Sponge	9000116
----------	----------------

\$3.50



Mr. Wipes Bio Home

Dishwashing Liquid

16.9 fl. oz.	1600020
--------------	----------------

\$11.90



Mr. Wipes Bio Home

Multi Purpose Cleaner

16.9 fl. oz.	1600016
--------------	----------------

\$9.90



Eco-Friendly Cleaning
Limpieza Ecológica



Mr. Wipes
Measuring Cup

2.36 fl. oz.	9000248
--------------	----------------

\$2.50



Mr. Wipes Home
Liquid Laundry
Detergent for Dark & Colors

16.9 fl. oz.	1600018
--------------	----------------

\$9.90



Mr. Wipes Home
Fabric Softener

16.9 fl. oz.	1600019
--------------	----------------

\$9.90



Mr. Wipes Home
Liquid Laundry
Detergent for Whites

16.9 fl. oz.	1600017
--------------	----------------

\$9.90



Mr. Wipes Bio Home
Fabric Freshener

3.9 fl. oz.	1600021
-------------	----------------





\$9.90

RECOMMENDED DOSE TABLE

TABLA DE DÓISIS RECOMENDADA

<p>MR. WIPES LIQUID LAUNDRY DETERGENT </p>	 <p>1 BOTTLE BOTELLA 10 LOADS LAVADAS 16.9 FL.OZ.</p>
<p>MR. WIPES FABRIC SOFTENER </p>	

RECOMMENDED DOSE TABLE | TABLA DE DÓISIS RECOMENDADA

PRODUCT NAME NOMBRE DEL PRODUCTO	DIRTY / SUCIO	VERY DIRTY / MUY SUCIO
Mr. Wipes Liquid Laundry Detergent for Dark & Colors	 1.12 fl. oz.	 1.49 fl. oz.
Mr. Wipes Liquid Laundry Detergent for Whites	 1.12 fl. oz.	 1.49 fl. oz.

PRODUCT NAME NOMBRE DEL PRODUCTO

RECOMMENDED DOSE TABLE | TABLA DE DÓISIS RECOMENDADA

Mr. Wipes Fabric Softener

Add .07 fl.oz. to final rinse cycle | Añadir 0.7 fl.oz. al ciclo final de enjuague

Mr. Wipes Multi Purpose Cleaner

Dilute 0.65 fl.oz. of detergent in 1 gallon of water
Diluya 0.65 onzas líquidas de detergente en 1 galón de agua

DR.C.TUNA



USA970001